



# PanelView File Transfer Utility (Catalog Number 2711-ND7)

## Overview

This document describes the PanelView File Transfer Utility. It is used to transfer PanelBuilder™ applications (stored as DOS files) between a computer that does not have Windows installed and a DH-485 version of a PanelView™ terminal.

Table of Contents	Page
What is the PanelView File Transfer Utility?	2
System Requirements	2
DH485 Connections	4
RS-232 Connections	6
Installing the PanelView File Transfer Utility	7
Configuration Setup File	8
Creating a DOS Application File for Transfer	9
File Transfer Command	10
Getting Help	11
Command Line Examples	12
Prompt Mode Examples	14
Troubleshooting	16

## Software Package

The PanelView File Transfer (PFT) Utility includes:

- 3 1/2 inch installation disk
- this document

A single copy of the PanelView File Transfer utility is supplied with the PanelBuilder Configuration software.

To use PFT on a computer that does not have PanelBuilder software installed, copy the following files from the C:\AB\PBWIN to a disk for transport to a DOS computer.

PFT.EXE	PanelView File Transfer DOS Utility
DEFAULT.STP	PanelView File Transfer configuration file
PIC485.EXE	PanelView File Transfer PIC module driver
KR.EXE	PanelView File Transfer KR card driver
<APP>.PVA	User PanelView application file

## Related Publications

The table below lists PanelBuilder related publications.

Publication Title	Publication No.
PanelBuilder Configuration Software User Manual	2711-6.0
PanelView Operator Terminal User Manual	2711-6.1
PanelBuilder Getting Started Manual	2711-6.2

## What is the PanelView File Transfer Utility?

The PanelView File Transfer Utility allows you to transfer PanelBuilder applications (stored as DOS files) between a personal computer and a DH-485 version of a PanelView terminal. There are two methods of creating a DOS application file (.PVA file type):

- Download an application to a DOS file from the Applications menu of the PanelBuilder Configuration Software.
- Upload an application from a PanelView terminal.

With the File Transfer Utility you can download a DOS application file to a PanelView terminal or upload a DOS application to a personal computer. Files are easily transferred using a command line or prompt mode format.

## System Requirements

The minimum hardware and software requirements for installing and running the PanelView File Transfer Utility are:

### Personal Computer Requirements

- MS-DOS™ operating system version 3.1 or later (MS-DOS version 5.0 or later recommended)
- Personal computer using 80286 or higher processor
- Minimum 640 KB of conventional memory (with 400 KB available)
- Hard disk (recommended)
- 3 1/2 inch low-density or high-density disk drive
- Serial communication port

### PanelBuilder Software

The PanelView File Transfer Utility only transfers PanelBuilder applications stored as DOS files (with a .PVA file type). Applications are downloaded to DOS files from the PanelBuilder Application menu. In addition, the PanelBuilder software is required to edit uploaded applications.

### PanelView Terminal

A DH-485 or RS-232 (DH-485 protocol) version of a PanelView terminal.

- A2 or A3 at the end of the catalog number identifies DH-485 terminals (for example, 2711-B5A2, 2711-K9A3).
- A5 or A9 at the end of the catalog number identifies RS-232 (DH-485 protocol) PanelView terminals (for example, 2711-B5A5, 2711-K9A9).

## Cables

### DH-485 Versions of PanelView Operator Terminals

The DH-485 versions of the PanelView terminals require the following items to transfer applications between a personal computer and the terminal.

- Personal Computer Interface Converter (Catalog No. 1747-PIC)
- Communications Cable (Catalog No. 1747-C10, -C11, -C20)
- Catalog No. 1747-AIC and 1747-PIC (DH485 multidrop connection)

The 1747-AIC converters require a 24V power supply.

The Personal Computer Interface Converter receives power from an SLC controller. Downloading an application to the terminal without an SLC connected requires a power supply (Catalog No. 1747-NP1) or a powered Link Coupler (Catalog No. 1747-AIC).

### RS-232 (DH-485 Protocol) Versions of PanelView Operator Terminals

The RS-232 (DH-485 protocol) versions of the PanelView terminals require one of these cables to transfer applications between a personal computer and the terminal.

- Catalog No. 2711-NC13
- Catalog No. 2711-NC14
- Catalog No. 2706-NC13

The difference between these cables is their cable length.

## Optional Equipment

Personal Computer Interface Card (Catalog No. 1784-KR) used for DH485 communications. The card requires you to set an environment variable using this command. It is not case sensitive.

```
set AB-OAKLAND=mxxx,yyyy,iz
```

where:

- x = memory address, C0000-EFFFFH
- y = I/O address; 2A8H-367H
- z = interrupt level; IRQ 2-9

The x, y and z parameters are dependent on the dip switch settings on the Personal Computer Interface Card (Catalog No. 1784-KR). Refer to the Installation Manual for details.

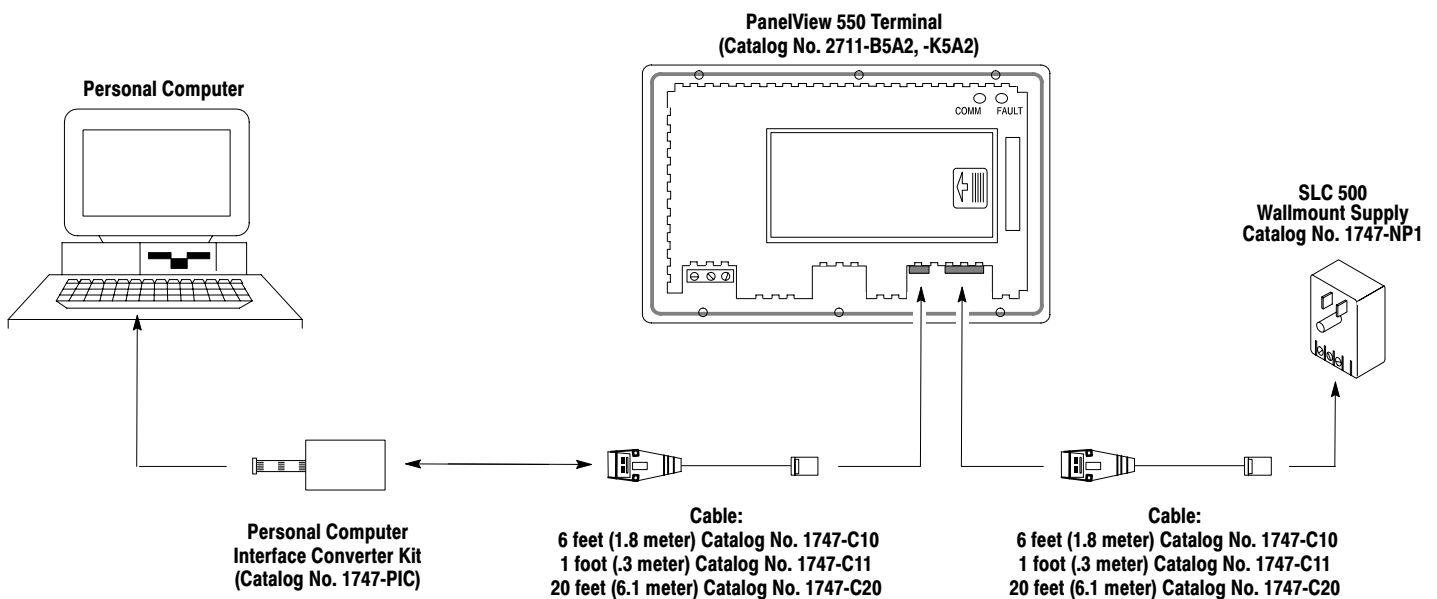
When using the Personal Computer Interface Card, the \$DRV parameter must be set to 1 in the configuration setup file.

## DH-485 Connections

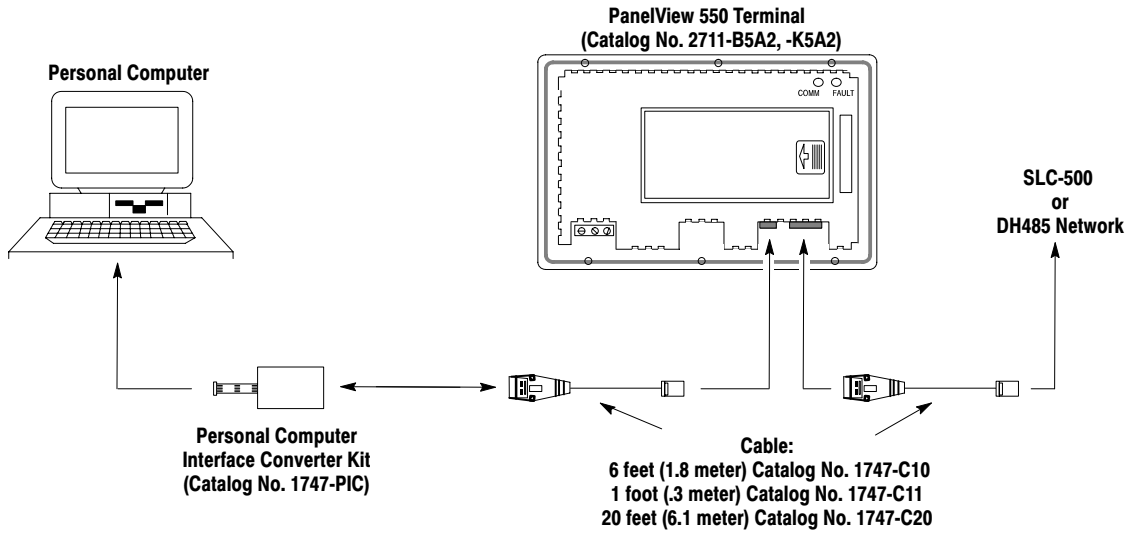
You can transfer DOS application files between DH485 versions of the PanelView terminal and a personal computer using various connections.

- Personal computer connected to PanelView terminal without an SLC controller connected.
- Personal computer connected to PanelView terminal with a single SLC controller connected.
- Personal computer connected to DH485 network with multidrop connections to several devices.

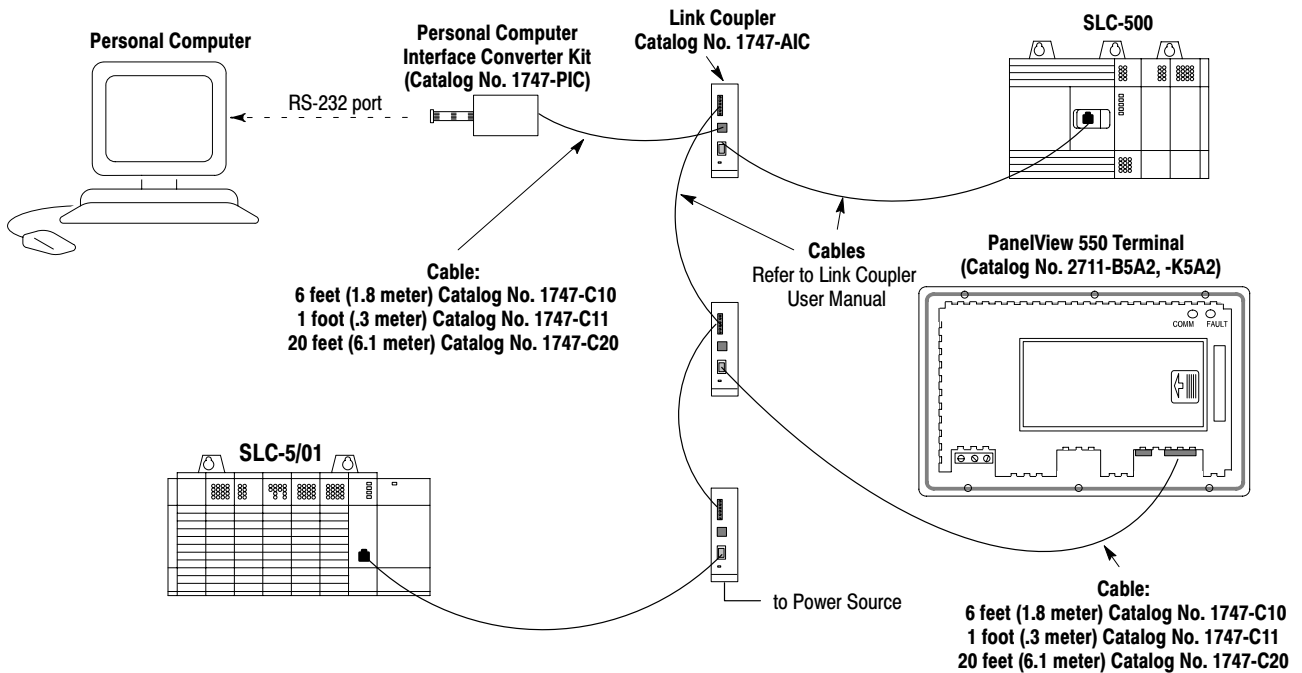
### Personal Computer Connected to PanelView 550 Terminal Without an SLC Connection



**Personal Computer Connected to PanelView 550 Terminal  
With an SLC 500 or DH485 Network Connection**



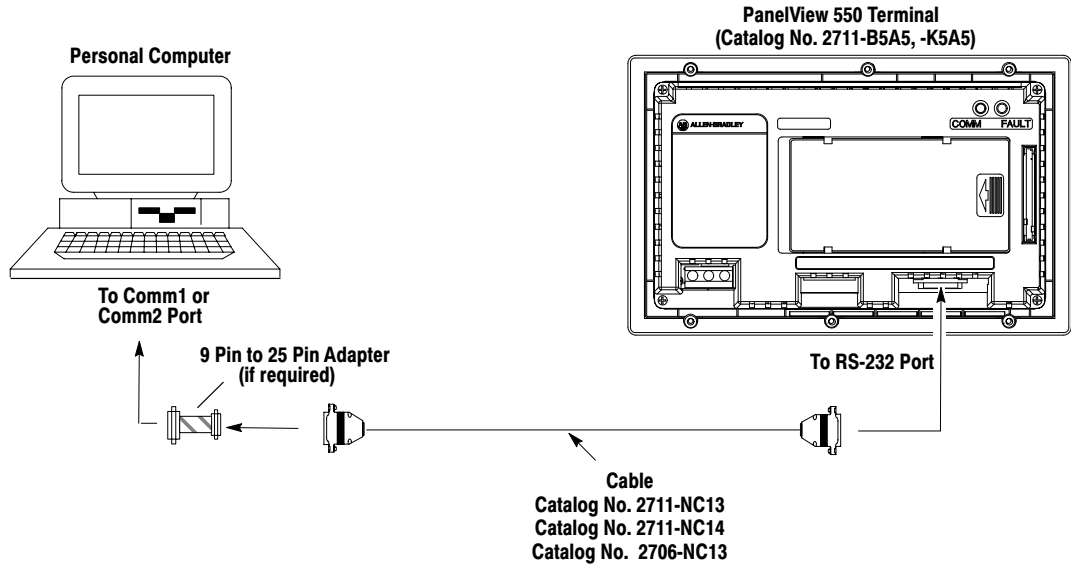
**Personal Computer Connected to Link Coupler with  
Multi-drop Connections to PanelView 550 Terminal**



## RS-232 Connections

The RS-232 (DH-485 protocol) versions of the PanelView terminals require the following connections to transfer DOS application files between the RS-232 ports of a personal computer and the PanelView terminal.

The following figure shows the connections required when transferring DOS application files between the RS-232 ports of a personal computer and the PanelView 550 terminal.



## Installing the PanelView File Transfer Utility

The following procedure installs the PanelView File Transfer Utility on your hard disk. The DOS command prompt may appear different on your computer.

### To install the PanelView File Transfer Utility:

1. Create a PFT subdirectory on your hard disk.

```
C:\> MD PFT
```

2. Change to the PFT subdirectory.

```
C:\> CD C:\PFT
```

3. Insert the installation disk in the floppy disk drive.

4. Type the following command line to copy the files from the installation disk to the PFT subdirectory.

```
C:\> COPY A:\*.*
```

The drive letter may be different on your computer.

5. Remove the installation disk from the drive.

## Configuration Setup File

The PanelView File Transfer Utility uses a setup file with stored parameters to establish communications with a PanelView terminal during a download or upload. The file is named DEFAULT.STP and has the following format:

```

$DRV      0
$BAUD     19200
$PORT     1
$MYNODE   0
$MAXADR   31
$TNODE    2
$BEEP     5

```

You can edit this file using a standard DOS text editor. The following table lists the possible settings for each parameter along with the defaults.

Parameters	Description	Defaults	Valid Settings
\$DRV	Hardware device	0	0 or 1 0 = 1747-PIC DH485 Driver 1 = 1784-KR driver
\$BAUD	Communication baud rate	19200	1200, 2400, 9600, 19200
\$PORT	Communication port	1	COM1, COM2
\$MYNODE	Node address of personal computer	0	0 to 31
\$MAXADR	Maximum node address on network	31	0 to 31
\$TNODE	Node address of PanelView terminal	2	1 to 31
\$BEEP	Number of times to beep when upload or download is complete	5	0 – 255

### Creating a New Setup File

The PanelView File Transfer Utility provides a default setup file, DEFAULT.STP, during installation. To create a new setup file:

- Enter the PFT command with a new setup file name. The utility creates the file with the default parameters listed above.

For example, the following PFT command creates the setup file NEW\_NAME.STP with the default parameters.

```
PFT> PFT D TEST.PBA NEW_NAME.STP
```

- Copy the default setup file DEFAULT.STP into a new file. Use a standard text editor to edit the setup parameters.

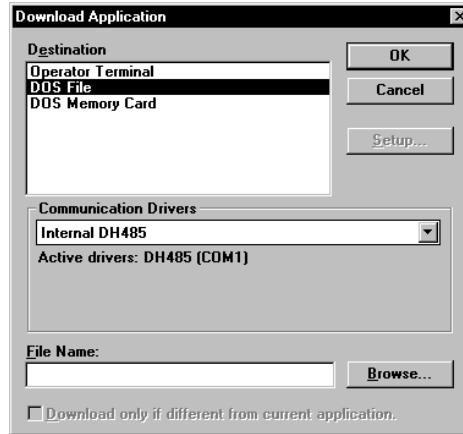


## Creating a DOS Application File for Transfer

PanelBuilder applications, by default, are created with a .PBA file type. This section shows how to create a DOS application file (with a .PVA file type) which you can then download to a PanelView terminal using the PanelView File Transfer Utility.

### From the PanelBuilder Configuration Software:

1. Choose Open from the File menu to open the application.
2. Choose Download from the Application menu.

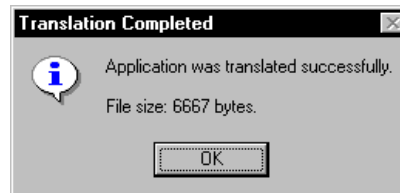


3. Select DOS File under Destination.
4. Enter the path and name of a .PVA file in the File Name box for saving the file to disk.

Or click the Browse button to search directories for the .PVA file in which you want to download the application.

5. Click the OK button from the Application Download dialog.

The application is validated, translated and downloaded to DOS with the .PVA file type. When done, PanelBuilder opens a dialog that shows the name of the .PVA file stored on disk.



6. Click the OK button.

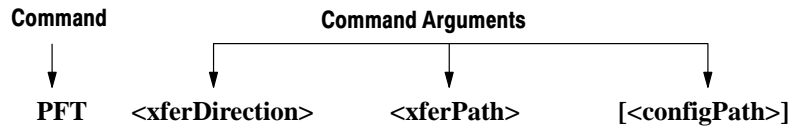
You can now exit the PanelBuilder Software and use the PanelView File Transfer Utility to download the .PVA file to a PanelView terminal.

If uploading an application from a PanelView terminal, the application file is already in a .PVA format.

## File Transfer Command

A file transfer is initiated by entering a command line from the PFT work directory. The command must be executed from the directory containing PFT.EXE and its drivers.

The format of the command line is:



**PFT** is the command.

**<xferDirection>** is either **D** (for download), or **UC** or **UO** (for upload).

- Use **D** to download a DOS application file from a personal computer to a PanelView terminal.
- Use **UO** or **UC** to upload a DOS application file from a PanelView terminal to a personal computer.

**UO** Uploads a DOS application file with the terminal's original (O) preset values.

**UC** Uploads a DOS application file with the terminal's current (C) preset values.

If you omit the transfer direction, the utility enters prompt mode.

**<xferPath>** is the path name of the application file in the form:  
drive:\path\filename

If you omit the drive or path, the command defaults to the current drive and directory. If you omit the filename, the utility prompts you to enter a filename.

For uploads, the file path indicates where to store the application.

**[<configPath>]** is the path name of the PFT configuration setup file.  
drive:\path\filename

If you omit the file path, the utility uses the default configuration file DEFAULT.STP stored in the current drive and directory. If this file is not found, the utility prompts you to enter another file path.

The command line isn't case sensitive so you can enter uppercase or lowercase characters.

If the \$BEEP parameter setting is greater than 0 in the setup file, the computer will beep when the transfer is complete.

If an error occurs during the transfer, the program displays a brief message with an error code. See the Troubleshooting section for a list of errors.

## Terminating a Command

You can press CTRL+C to cancel a file transfer command. The program prompts you to confirm the termination.

```
Abort file transfer? (Y/N): No
```

You must respond within 10 seconds with a Yes or No or a timeout will occur and the transfer will continue.

## Getting Help

Help is available by entering PFT ?. After entering this command your display lists parameters for the PFT command.

The following example shows what information is displayed when you enter PFT ?.

```
PFT> PFT ?
PanelView File Transfer Utility.
Version X.XX, Month DD, YYYY
Copyright 1993-95, Allen-Bradley Company, Inc.
  Press CTRL+C or CTRL+BREAK to abort the file transfer!

Usage:PFT <xferDirection> <xferPath> [<configPath>]
Where:xferDirection = 'UC' to upload file with current presets,
              'UO' to upload file with original presets,
              'D' to download.
      xferPath      = Complete path to where the transfer file resides
                    On an upload, this is where the uploaded file
                    will be stored.
      configPath    = Complete path to where the configuration file
                    resides (defaults to "DEFAULT.STP")
```

## Command Line Examples

This section provides examples of the PFT command in command line mode. In command line mode, the command and its arguments are entered on the same line. You must initiate the command from the PFT work directory. You'll hear a beep when the transfer is complete (if \$BEEP setting is greater than 0 in the setup file).

**Example 1:** Downloads the application file PUMP.PVA from the B drive to the PanelView terminal using the configuration file CONFIG.STP in the PFT directory.

```
PFT> PFT D B:\PUMP.PVA C:\PFT\CONFIG.STP
PanelView File Transfer Utility.
Version X.XX, Month DD, YYYY
Copyright 1993-95, Allen-Bradley Company, Inc.
  Press CTRL+C or CTRL+BREAK to abort the file transfer!

Download from file B:\PUMP.PVA to PanelView using
C:\PFT\CONFIG.STP...
Attempting to establish communication with PanelView Terminal
File size: 4574 bytes. Bytes transferred: 4574
Transfer completed. Waiting for verification from Terminal ...
File transfer successful.
```

**Example 2:** Downloads the application file PUMP.PVA in the current drive and directory to the PanelView terminal using the default configuration file DEFAULT.STP in the current drive and directory.

```
PFT> PFT D PUMP.PVA
PanelView File Transfer Utility.
Version X.XX, Month DD, YYYY
Copyright 1993-95, Allen-Bradley Company, Inc.
  Press CTRL+C or CTRL+BREAK to abort the file transfer!

Download from file PUMP.PVA to PanelView using DEFAULT.STP...
Attempting to establish communication with PanelView Terminal
...
File size: 8,967 bytes. Bytes transferred: 8,967
Transfer completed. Waiting for verification from Terminal ...
File transfer successful.
```

**Example 3:** Uploads the current application in the PanelView terminal (with original file settings) to the file MOTOR.PVA in the current drive and directory using the configuration file CONFIG.STP in the PFT directory.

```
PFT> PFT UO MOTOR.PVA C:\PFT\CONFIG.STP
PanelView File Transfer Utility.
Version X.XX, Month DD, YYYY
Copyright 1993-95, Allen-Bradley Company, Inc.
  Press CTRL+C or CTRL+BREAK to abort the file transfer!

Uploading from PanelView to file MOTOR.PVA using
C:\PFT\CONFIG.STP..
Attempting to establish communication with PanelView Terminal
...
File size: 8,967 bytes. Bytes transferred: 8,967
Transfer completed. Waiting for verification from Terminal ...
File transfer successful.
```

**Example 4:** Uploads the current application in the PanelView terminal to PUMP.PVA in the current directory using the configuration file CONFIG.STP in the PFT directory. The file already exists so the user is prompted to either overwrite the file or enter another name. In this example, the application is uploaded to NEWPUMP.PVA keeping the original intact.

```
PFT> PFT UC PUMP.PVA C:\PFT\CONFIG.STP
PanelView File Transfer Utility.
Version X.XX, Month DD, YYYY
Copyright 1993-95, Allen-Bradley Company, Inc.
  Press CTRL+C or CTRL+BREAK to abort the file transfer!

Application file PUMP.PVA already exists. Overwrite?(Y/N) No
Enter the transfer file path: NEWPUMP.PVA
Uploading from PanelView to file NEWPUMP.PVA using
C:\PFT\CONFIG.STP...
Attempting to establish communication with PanelView Terminal
...
File size: 8,967 bytes. Bytes transferred: 8,967
Transfer completed. Waiting for verification from Terminal ...
File transfer successful.
```

## Prompt Mode Examples

You can use the File Transfer command in command line mode or prompt mode. In command line mode, the command and its arguments are entered on the same line. In prompt mode, you are prompted for the arguments.

If you enter the PFT command and press ENTER you are prompted for the command arguments.

**Important:** You can cancel the prompt mode at any time by pressing the CTRL+C keys.

You can press the F1 key in response to a prompt to list valid responses. The examples below show what information is displayed if you press the F1 key after some of the prompts.

```
Press 'U' to upload, or 'D' to download: Download
Valid responses are: Download
                    Upload
```

```
Upload current or original preset? (C/O): Original Presets
Valid responses are: Current Presets
                    Original Presets
```

```
Application file FILE.PVA already exists. Overwrite (Y/N):No
Valid responses are: Yes
                    No
```

**Example 1:** Downloads the application file PUMP.PVA in the current drive and directory to the PanelView terminal using the default configuration file DEFAULT.STP in the current directory.

```
PFT> PFT
PanelView File Transfer Utility.
Version X.XX, Month DD, YYYY
Copyright 1993-95, Allen-Bradley Company, Inc.
  Press CTRL+C or CTRL+BREAK to abort the file transfer!

Press 'U' to upload or 'D' to download: Download
Enter the transfer file path: PUMP.PVA
Download from file PUMP.PVA to PanelView using DEFAULT.STP ...
Attempting to establish communication with PanelView Terminal
...
File size: 2560 bytes. Bytes transferred: 2560
Transfer completed. Waiting for verification from Terminal ...
File transfer successful.
```

**Example 2:** Tries to upload the current application in the PanelView terminal to PUMP.PVA in the current drive and directory using the default configuration file DEFAULT.STP in the current directory. PUMP.PVA already exists so the user is asked to either overwrite the file or enter another name. The application is uploaded to the file NEWPUMP.PVA instead leaving PUMP.PVA intact.

```
PFT> PFT
PanelView File Transfer Utility.
Version X.XX, Month DD, YYYY
Copyright 1993-95, Allen-Bradley Company, Inc.
  Press CTRL+C or CTRL+BREAK to abort the file transfer!

Press 'U' to upload or 'D' to download: Upload
Upload current or original preset? (C/O): Original Presets
Enter the transfer file path: PUMP.PVA
Application file PUMP.PVA already exists. Overwrite (Y/N):No
Enter the transfer file path: NEWPUMP.PVA
Uploading from PanelView to file NEWPUMP.PVA using DEFAULT.STP
...
Attempting to establish communication with PanelView Terminal
...
File size: 4573 bytes. Bytes transferred: 4573
Transfer completed. Waiting for verification from Terminal ...
File transfer successful.
```

**Important:** If CTRL+C is pressed to cancel a file transfer command, the program prompts you to confirm the termination.

```
Abort file transfer? (Y/N): No
```

You must respond within 10 seconds with a Yes or No or a timeout will occur and the transfer will continue.

## Troubleshooting

The following table provides a list of error messages that can occur during a file transfer. Messages are listed by their numeric code.

Error Code	Error Message	Meaning	What to do
E002	Transfer file is not found in the specified directory.	The PanelView .PVA application file specified on the command line could not be found.	Re-enter the command and specify the complete path name for the file or move the file to the current work directory.
E003	Setup file is not found in the current work directory.	The configuration setup .STP file specified on the command line could not be found.	Re-enter the command and specify the complete path name for the setup file or move the file to the current work directory.
E004	Transfer terminated.	CTRL+C was pressed to abort the transfer or the terminal aborted the transfer.	
E005	Cannot establish link with terminal. Check node address and physical connections.	The transfer utility cannot communicate with the PanelView terminal. Possible causes are: <ul style="list-style-type: none"> <li>▪ broken physical connections</li> <li>▪ incorrect settings in setup .STP file</li> <li>▪ node address of terminal must match the node address setting in the .STP file</li> </ul>	<ol style="list-style-type: none"> <li>1. Check all cable connections.</li> <li>2. Modify incorrect settings in .STP file.</li> <li>3. Make sure node address of terminal matches node address in .STP file.</li> </ol>
E006	Error sending to terminal.	The transfer failed while sending data to the PanelView terminal. Possible causes are: <ul style="list-style-type: none"> <li>▪ insufficient memory on computer</li> <li>▪ computer hardware failure</li> </ul>	<ol style="list-style-type: none"> <li>1. Check for sufficient memory on computer.</li> <li>2. Correct hardware problem.</li> </ol>
E007	Cannot read from transfer file. File may be corrupted.	The transfer utility could not read the from the application file (.PVA). Possible causes are: <ul style="list-style-type: none"> <li>▪ floppy disk removed from drive or drive door open</li> <li>▪ computer hard disk failure</li> </ul>	<ol style="list-style-type: none"> <li>1. Make sure floppy is loaded correctly.</li> <li>2. Correct hard disk problem.</li> </ol>
E008	Error occurred while writing to disk drive. Disk may be full.	The transfer utility could not write to the specified file during an upload. Possible causes are: <ul style="list-style-type: none"> <li>▪ floppy disk removed from drive or drive door open</li> <li>▪ disk is full</li> </ul>	<ol style="list-style-type: none"> <li>1. Make sure floppy is loaded correctly.</li> <li>2. Make sure there is sufficient memory.</li> <li>3. Correct hard disk problem.</li> <li>4. Make room on disk for file.</li> </ol>
E009	Error occurred while opening transfer file. File may be corrupted.	The transfer utility could not read or write to the specified file during an upload or download. Possible causes are: <ul style="list-style-type: none"> <li>▪ invalid DOS file specified on command line</li> <li>▪ specified path or file name does not exist</li> <li>▪ computer hardware failure</li> </ul>	<ol style="list-style-type: none"> <li>1. Re-enter command line with correct DOS file name.</li> <li>2. Re-enter command line with correct path or file name.</li> <li>3. Correct hardware problem.</li> </ol>
E010	Transfer completed.	The upload or download completed successfully without errors.	
E011	Communication timeout occurred. PanelView terminal is not responding. Please check setup file and connections.	The PanelView terminal failed to respond to the request for data or the utility did not receive the data request from the terminal within the timeout period. Possible causes are: <ul style="list-style-type: none"> <li>▪ incorrect settings in .STP file</li> <li>▪ broken physical connection</li> <li>▪ computer hardware failure</li> </ul>	<ol style="list-style-type: none"> <li>1. Check setup file for correct settings.</li> <li>2. Check all cable connections.</li> <li>3. Correct computer hardware failure.</li> </ol>
E012	Too many arguments on command line. For help, type PFT ?	Command line was entered incorrectly.	Re-enter command line correctly or if you need assistance enter PFT ? for help.
E013	No PanelView Terminal with that node address on the link. Please check the setup file.	Incorrect node address entered in setup file.	Edit the setup file and enter correct node number for PanelView terminal.



Error Code	Error Message	Meaning	What to do
E014	Error initializing COM. Check setup file	COM port couldn't be initialized. Possible causes are: <ul style="list-style-type: none"> <li>▪ incorrect settings is setup .STP file</li> <li>▪ insufficient computer memory</li> <li>▪ missing drivers (PIC485.EXE and KR.EXE)</li> </ul>	<ol style="list-style-type: none"> <li>1. Check setup file for correct settings.</li> <li>2. Check for sufficient memory on computer.</li> <li>3. Check for missing drivers (PIC485.EXE and KR.EXE). Re-install if necessary.</li> </ol>
E015	Invalid setup file. Setup file may be corrupted.	The setup file (.STP) is invalid.	Edit the setup file (.STP) appropriately.
E016	Error communicating with PanelView Terminal. Terminal may not be online.	Communications could not be established with the terminal.	<ol style="list-style-type: none"> <li>1. Check all cable connections.</li> <li>2. Check settings in .STP file.</li> <li>3. Make sure node address of terminal matches node address in .STP file.</li> </ol>
E017	PanelView Terminal sent an erroneous reply.		Call Allen-Bradley for technical support.
E018	COMM drivers are not found in the directory containing PFT.EXE. Please run INSTALL again.	Missing drivers (PIC485.EXE and KR.EXE).	Re-install the PFT utility.
E019	The environment variable AB_OAKLAND is not set.	When transferring file using the KR card, the environment variable AB_OAKLAND was not set correctly.	Environment variable AB_OAKLAND must be set according to the instructions in this manual.
E020	Cannot write to transfer file. Disk may be full or drive door open.	During an upload the program could not write to the specified file. Possible causes are: <ul style="list-style-type: none"> <li>▪ floppy disk removed from drive</li> <li>▪ drive door not closed</li> <li>▪ disk is full.</li> </ul>	Check installation of the diskette. Check available disk space on the drive.
E021	Memory error occurred.	The computer does not have sufficient memory to run the utility.	Remove Terminate and Stay Resident (TSR) programs from memory.
E022	Application file is not compatible. Application file hardware requirements NOT supported by terminal or file not created with the latest PanelBuilder software.	Either the application hardware requirements (terminal type) are not supported by the terminal or the application file was created with an old version of PanelBuilder.	<ol style="list-style-type: none"> <li>1. Check the application file and make sure the terminal type is appropriate for the terminal to which you are downloading.</li> <li>2. Recreate application with new version of PanelBuilder.</li> </ol>
E023	Bad data received.		Call Allen-Bradley for technical support.
E024	Bad data count received.		Call Allen-Bradley for technical support.
E025	Application file failed CRC check. The transfer file may be corrupted.	The terminal rejected the application file because the CRC (Cyclic Redundancy Check) was incorrect. File may be corrupted.	Try again. The original application in the terminal is deleted.
E026	Invalid parameters received.		Call Allen-Bradley for technical support.
E027	Insufficient space available for application file.	The terminal rejected the application because the file was too big.	Decrease the size of the application.
E028	No memory card installed on terminal.		Call Allen-Bradley for technical support.
E029	Invalid format detected in application file. The transfer file may be corrupted.	The terminal rejected a download because the application file contains incorrect data.	Correct deficiencies in application.
E030	Memory card is write protected.		Call Allen-Bradley for technical support.
E031	File already exists on memory card.		Call Allen-Bradley for technical support.
E032	Invalid transfer information received.		Call Allen-Bradley for technical support.
E033	Bad hardware configuration detected on terminal.		Call Allen-Bradley for technical support.

<b>Error Code</b>	<b>Error Message</b>	<b>Meaning</b>	<b>What to do</b>
E034	PanelView refused File Open. Device may be busy or may NOT have an application.	During an upload, the utility could not access the application file. Probable causes are: <ul style="list-style-type: none"> <li>▪ the terminal is running application</li> <li>▪ the terminal does not contain application</li> </ul>	Wait until the terminal is not running the application.
E035	Unknown error detected on terminal.		Call Allen-Bradley for technical support.
E036	Error opening disk file.	During an upload or download, the program couldn't open the file. Possible causes are: <ul style="list-style-type: none"> <li>▪ Invalid DOS file name specified in the command line</li> <li>▪ Specified path or file name doesn't exist</li> </ul>	Re-enter the command with the appropriate file name path.
E037	Error closing disk file.	During an upload, the program could not close the specified disk file. Possible causes are: <ul style="list-style-type: none"> <li>▪ floppy disk removed from drive</li> <li>▪ drive door not closed</li> <li>▪ bad floppy disk</li> </ul>	<ol style="list-style-type: none"> <li>1. Make sure floppy is loaded.</li> <li>2. Make sure drive door is closed.</li> <li>3. Use new floppy disk.</li> </ol>
E038	Error reading from disk file.	During an upload or download, the program could not open the file. Possible causes are: <ul style="list-style-type: none"> <li>▪ Invalid DOS file name specified in the command line</li> <li>▪ Specified path or file name doesn't exist</li> </ul>	Re-enter the command with the appropriate file name path.
E039	Setup file may contain invalid parameters. Edit setup file or create a new one.	The setup file (.STP) is not a valid setup file or may contain some invalid parameters.	Edit parameters in the setup file (.STP) as appropriate or create a new setup file.
E040	Invalid baud rate specified in setup file.	The setup file (.STP) contains an invalid baud rate. Valid rates are 1200, 2400, 9600, 19200.	Edit the setup file (.STP) and enter a valid baud rate.
E041	Invalid driver specified in setup file.	The setup file (.STP) contains an invalid driver. Only two values are allowed: 0 for PIC485.EXE or 1 for KR.EXE.	Edit the setup file (.STP) and enter a value for the appropriate driver.
E042	Invalid node address specified in setup file.	The node address must be a value in the range of 0 to 31.	Edit the setup file (.STP) and change the node address value.
E043	Invalid maximum node address specified in setup file. Correct and try again.	The maximum node address must be in the range 0 to 31 and the node address must be less than the maximum node address.	Edit the setup file (.STP) and change the maximum node address value.
E044	Invalid transfer direction specified on command line. Use 'D', 'UO' or 'UC'.	The command line did not contain D, UO or UC to specify the transfer direction.	Enter the command line again specifying D, UO or UC.
E045	No timer is available in PanelView Terminal.	Terminal timer resources exhausted.	Call Allen-Bradley for technical support.
E046	Application file is not found by the PanelView Terminal.	The command line specified an invalid file path or nonexistent file.	Enter command line again specifying valid application file path.
E047	The target PanelView Terminal is not on the link. Check physical connections and node address settings. The following nodes are on the link: Node #0 Node #4 etc...	The transfer utility can't communicate with PanelView terminal. Possible causes are: <ul style="list-style-type: none"> <li>▪ broken physical connections</li> <li>▪ incorrect settings in setup .STP file</li> <li>▪ node address of terminal must match the node address setting in the .STP file</li> </ul>	<ol style="list-style-type: none"> <li>1. Check all cable connections.</li> <li>2. Modify incorrect settings in .STP file.</li> <li>3. Make sure node address of terminal matches node address in .STP file.</li> </ol>
E048	The specified node address is not a PanelView Terminal. Retry with a valid node address.	The setup file contains an invalid node address for the terminal.	Edit the setup file (.STP) and change the node address value. The node address value must match the node address of the terminal.
E049	The specified PFT node address is already in use on the network. No node available!	The network node assigned to the personal computer running the PFT utility is already in use. The utility will try to temporarily switch to an available node and perform the transfer.	If the specified node is not available or if another node is not temporarily available for the transfer, you will have try again later.



Rockwell Automation helps its customers receive a superior return on their investment by bringing together leading brands in industrial automation, creating a broad spectrum of easy-to-integrate products. These are supported by local technical resources available worldwide, a global network of system solutions providers, and the advanced technology resources of Rockwell.

## Worldwide representation.



Argentina • Australia • Austria • Bahrain • Belgium • Bolivia • Brazil • Bulgaria • Canada • Chile • China, People's Republic of • Colombia • Costa Rica • Croatia • Cyprus • Czech Republic • Denmark • Dominican Republic • Ecuador • Egypt • El Salvador • Finland • France • Germany • Ghana • Greece • Guatemala • Honduras • Hong Kong • Hungary • Iceland • India • Indonesia • Iran • Ireland • Israel • Italy • Jamaica • Japan • Jordan • Korea • Kuwait • Lebanon • Macau • Malaysia • Malta • Mexico • Morocco • The Netherlands • New Zealand • Nigeria • Norway • Oman • Pakistan • Panama • Peru • Philippines • Poland • Portugal • Puerto Rico • Qatar • Romania • Russia • Saudi Arabia • Singapore • Slovakia • Slovenia • South Africa, Republic of • Spain • Sweden • Switzerland • Taiwan • Thailand • Trinidad • Tunisia • Turkey • United Arab Emirates • United Kingdom • United States • Uruguay • Venezuela

Rockwell Automation Headquarters, 1201 South Second Street, Milwaukee, WI 53204-2496 USA, Tel: (1) 414 382-2000 Fax: (1) 414 382-4444

Rockwell Automation European Headquarters, Avenue Hermann Debroux, 46, 1160 Brussels, Belgium, Tel: (32) 2 663 06 00, Fax: (32) 2 663 06 40

Rockwell Automation Asia Pacific Headquarters, 27/F Citicorp Centre, 18 Whitfield Road, Causeway Bay, Hong Kong, Tel: (852) 2887 4788, Fax: (852) 2508 1846

World Wide Web: <http://www.ab.com>

# AB PLCs