

PanelBuilder32™



Product Profile

Application Development Software for PanelView Standard Terminals

PanelBuilder32 is a configuration tool for the entire family of PanelView™ Standard terminals (PanelView 550, 600, 900, 1000 and 1400). It offers the control systems developer an advanced environment to develop and maintain PanelView Standard terminal applications. Designed to operate on Microsoft® Windows NT® or Windows® 95/98 operating systems, PanelBuilder32 features an intuitive development environment.

PanelBuilder32 maximizes performance, reduces product development time and improves productivity. The Microsoft Windows graphical interface simplifies application development. Screen design is easy using such tools as symbols, objects, graphics and imported bitmap images.

New Features

- **User Configurable Development Environment** with floating/docked windows, workbook mode, toolbar options and more. That means PanelBuilder32 can be set up in a way that best meets the Control Developer's needs.
- **Usability Improvements:**
 - Tool tips pop up to remind of toolbar functions
 - Data tips pop up for each object on a screen and provide detailed control information
 - Context-sensitive help is always available on all tools and objects.
 - Alignment tools
 - Similar look and feel to other Rockwell Software/Allen-Bradley software packages.
- **Productivity Enhancing Tools:** Warning filter enable/disable allows the experienced user to select which application conflicts are brought to their attention. If an application error or warning occurs during validation, One Click navigation brings up the PanelBuilder32 dialog that needs modification.
- **Private or Shared Tag Database:** Not sharing tags allows each PanelView application to have its own tag database.



Shared tag database, known as "Projects", can be selected if all the control tags for a variety of PanelView applications must be the same.

- **ControlLogix Family Native Symbolic Addressing Support:** In addition to supporting PLC-5® family, Small Logic Controller family and Micrologix™ family of Logic Controllers, PanelBuilder32 also supports the most powerful controller platform from Rockwell Automation/Allen-Bradley, the ControlLogix™ family.
- **Advanced Upload/Download Capability** direct to the PanelView terminal or across network bridges, such as the ControlLogix bridge.
- **Backward Compatibility:** Open, modify and save previous version applications as PanelBuilder32 or PanelBuilder v 2.60 compatible .pba or .pva files.



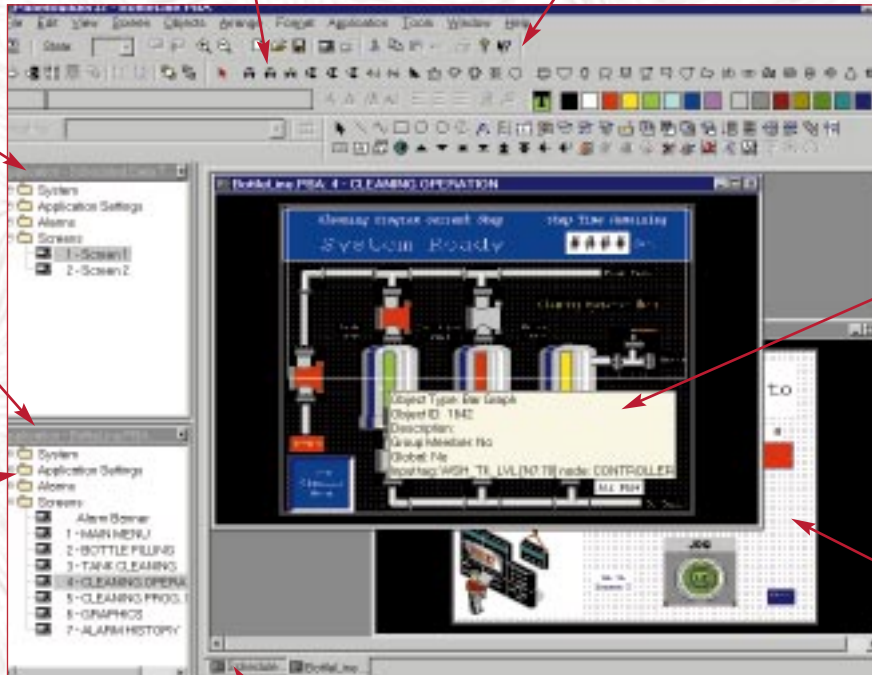
Bringing Together Leading Brands in Industrial Automation

Toolbars can be opened or closed for space savings and are expandable and dockable.

Context Sensitive Help is always a click away. Get answers to all your PanelView screen development questions.

Open multiple applications at the same time. Use Cut and Paste Drag and Drop editing to move objects from one application or screen to another.

File format makes it easy to work with application settings and screens.



Standard ISA symbols for industry standard screen design

Data Tips show the control behind the object for fast and easy function review.

Open re-use and save legacy PanelView Applications. Maintains value in your PanelView Investment.

Workbook Mode shows open applications and screens for easy navigation.

Other Important Features

- ✓ ControlNet™ and DeviceNet™ Open Network Support as well as DH+™, RIO, DF1 and DH485.

- ✓ HMI support for all of Rockwell Automation / Allen-Bradley Logic Controllers.
- ✓ PanelBuilder32 develops applications for the entire family of PanelView Standard Terminals.

Additional Features

- Tag Import Export to and from Rockwell Software Logic Controller programming packages.
- Convert existing PanelView standard applications to support other Rockwell Automation/Allen-Bradley Logic controllers and communication protocols.
- Supports ControlNet™, DeviceNet™ Open Network Protocols as well as DH+, RIO, DF1, DH485 and Modbus.
- Spread sheet editor format for Multi-State objects and text editor insuring easy editing, cutting and pasting to and from popular commercial spreadsheet programs.
- All user manuals in convenient .PDF format.

Operating System Requirements

- Windows 95 or 98, Windows NT 4.0 with Service Pack 3. Includes both 16 bit and 32 bit versions

Hardware Requirements

- 100 MHz Pentium® CLASS 2 or greater PC compatible
- 32 MB RAM (48 MB RAM recommended)
- 65 MB free disk for minimum installation
- Monitor
 - 16 Color VGA Graphics Adapter
 - 800 x 600 VGA or better

Microsoft, Windows and Windows NT are registered trademarks of Microsoft Corporation. ControlNet is a trademark of ControlNet International, Ltd. DeviceNet is a trademark of Open DeviceNet Vendor Association, Inc. Pentium is a registered trademark of Intel Corporation. PanelBuilder32, PanelView, DH+, RSLogix, MicroLogix and ControlLogix are trademarks of Rockwell Automation. PLC-5 is a registered trademark of Rockwell Automation.

Americas Headquarters, 1201 South Second Street, Milwaukee, WI 53204, USA, Tel: (1) 414 382-2000, Fax: (1) 414 382-4444
European Headquarters SA/NV, avenue Herrmann Debroux, 46, 1160 Brussels, Belgium, Tel: (32) 2 663 06 00, Fax: (32) 2 663 06 40
Asia Pacific Headquarters, 27/F Citicorp Centre, 18 Whitfield Road, Causeway Bay, Hong Kong, Tel: (852) 2887 4788, Fax: (852) 2508 1846

