



Remote Keyswitch and RS-232 Port Assembly

(Cat. No. 2711-NC2)

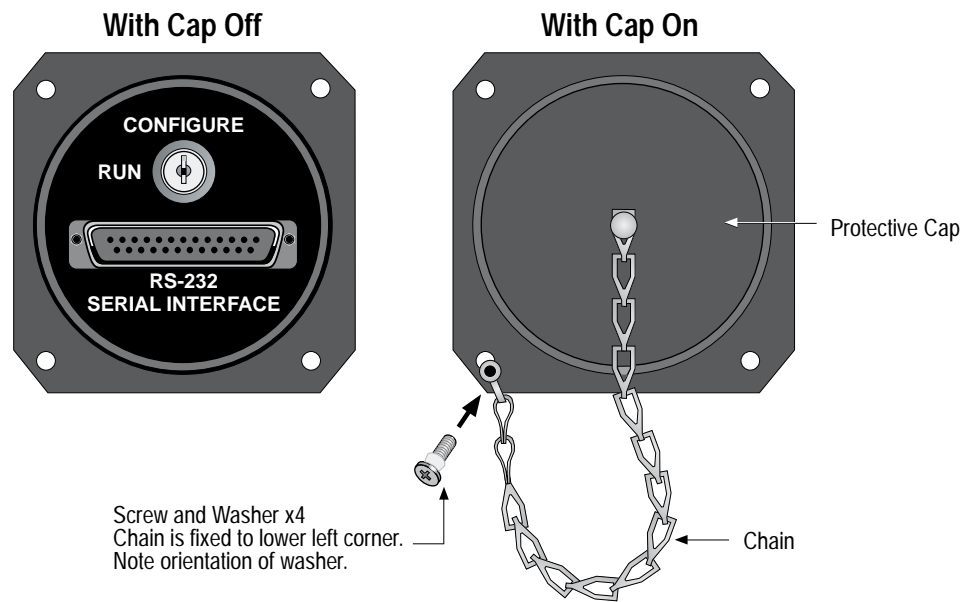
(For PanelView 1200, 1200e and 1400e Terminals;
Cat. Nos. 2711-KA1, 2711-KC1, 2711-TA1, 2711-TC1, 2711-TA4,
2711-TC4, 2711E-T12C6, 2711E-K12C6, 2711E-T12C4,
2711E-K12C6L2, 2711E-T14C6, 2711E-K14C6)

Description

The Remote Keyswitch and RS-232 Port Assembly consists of a Mode Select Keyswitch and an RS-232 port installed in a housing. This assembly can be mounted in a location that provides easier access than the keyswitch and port on the rear of the PanelView terminal.

The assembly is attached to a 10 foot (3 m) cable that connects to the RS-232 serial interface port on the rear of the PanelView terminal. It must be mounted with the attached gasket, washers, and screw-on cap. The cap must be fastened to one of the mounting screws with the chain provided. When not in use, the cap protects the assembly to maintain a NEMA 4X rating (indoor use only).

Figure 1
Remote Keyswitch and RS-232 Port, Front View



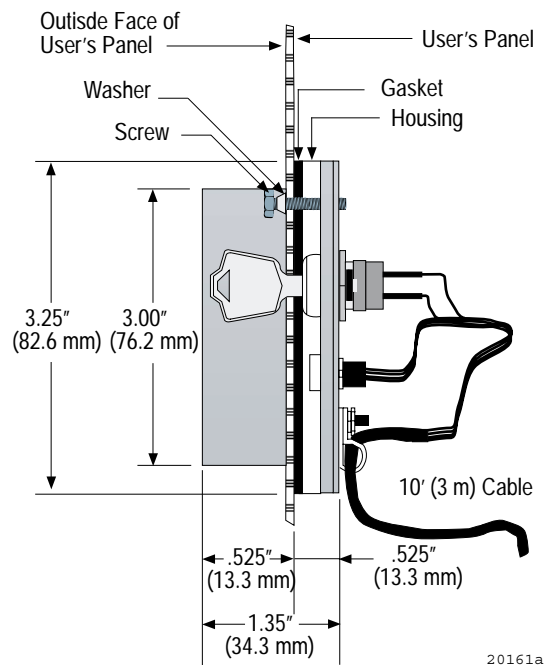
20158a

Parts Included

The Remote Keyswitch and RS-232 Port Assembly package includes the following:

- 1 main assembly (housing and cable)
- 4 mounting screws
- 4 washers
- 2 keys
- 1 protective screw-on cap and 1 chain
- 1 instruction sheet

Figure 2
Remote Keyswitch and RS-232 Port Side View

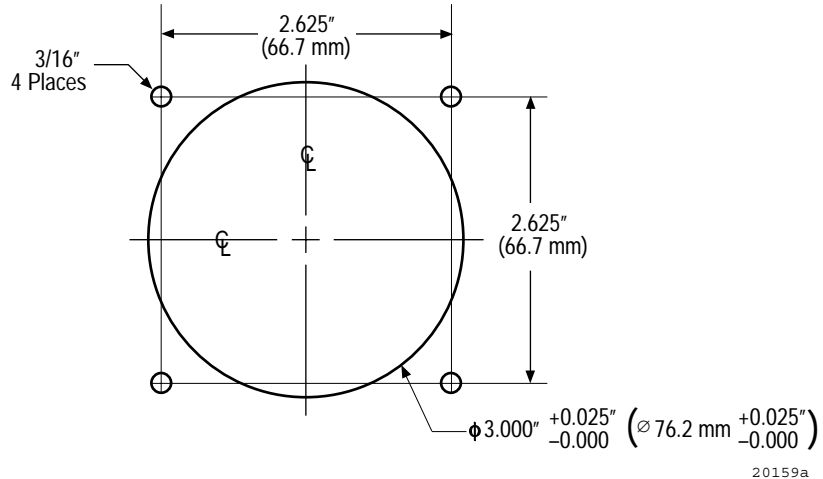


Installing the Remote Keyswitch Assembly

To install the Remote Keyswitch and RS-232 Port Assembly, follow the steps below. Refer to Figure 3 for dimensions.

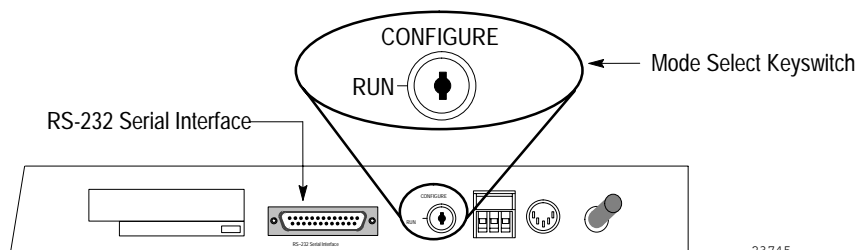
1. Make a cutout in the panel door, and drill four mounting holes. Ensure the four holes are free of burrs.

Figure 3
Cutout Dimensions



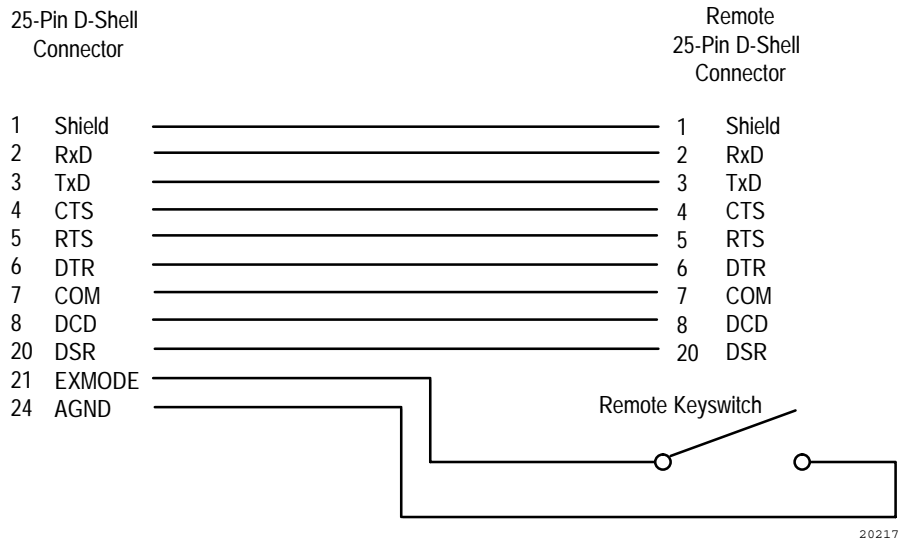
2. Install the assembly in the cutout, from the rear of the panel.
3. Use the washers provided between the screw heads and the front side of the panel. The narrow end of the washer is oriented towards the head of the screw, as illustrated in Figure 1.
4. Fasten the housing to the panel door with the four mounting screws provided. To maintain a good seal, torque the screws down to between 9 and 12 inch-pounds.
5. Before installing the lower left mounting screw, thread the screw through the end of the restraining chain attached to the cap. Then install the screw in the housing.
6. Connect the RS-232 connector on the assembly to the RS-232 serial interface port on the rear of the PanelView terminal (Figure 4). Attach it with the mounting screws on the connector housing.

Figure 4
RS-232 Serial Interface Port on the Back of the Terminal



7. Set the Mode Select Keyswitch on the back of the terminal to Run Mode, otherwise the Remote Keyswitch and RS-232 Port will not be able to operate (see Figure 4).
8. Hand-tighten the cap securely to maintain a NEMA 4X seal when the Remote Keyswitch and RS-232 Port Assembly is not in use.

Figure 5
Cable Diagram



Allen-Bradley, a Rockwell Automation Business, has been helping its customers improve productivity and quality for more than 90 years. We design, manufacture and support a broad range of automation products worldwide. They include logic processors, power and motion control devices, operator interfaces, sensors and a variety of software. Rockwell is one of the world's leading technology companies.



Worldwide representation.

- Argentina • Australia • Austria • Bahrain • Belgium • Brazil • Bulgaria • Canada • Chile • China, PRC • Colombia • Costa Rica • Croatia • Cyprus • Czech Republic • Denmark • Ecuador • Egypt • El Salvador • Finland • France • Germany • Greece • Guatemala • Honduras • Hong Kong • Hungary • Iceland • India • Indonesia • Ireland • Israel • Italy • Jamaica • Japan • Jordan • Korea • Kuwait • Lebanon • Malaysia • Mexico • Netherlands • New Zealand • Norway • Pakistan • Peru • Philippines • Poland • Portugal • Puerto Rico • Qatar • Romania • Russia-CIS • Saudi Arabia • Singapore • Slovakia • Slovenia • South Africa, Republic • Spain • Sweden • Switzerland • Taiwan • Thailand • Turkey • United Arab Emirates • United Kingdom • United States • Uruguay • Venezuela • Yugoslavia

Allen-Bradley Headquarters, 1201 South Second Street, Milwaukee, WI 53204 USA, Tel: (1) 414 382-2000 Fax: (1) 414 382-4444