



Installing the PanelView™ Serial Firmware Upgrade Utility (Catalog Number 2711E-ND7)

Overview

This installation sheet describes how to install the Serial Firmware Upgrade Utility on the host PC.

If you are using PanelView 1000e Series D and later or PanelView 1400e Series F and later terminals, you can run Firmware Version 5.14 only. Therefore, you must install Serial Firmware Upgrade Utility Version 5.14 and later on the host PC.

Installing SFU32 from “PanelBuilder 1400e” (2711-ND1) CD-ROM onto Windows 2000 (SP2)/NT/95

The Serial Firmware Upgrade Utility Version 5 (SFU32) is provided on CD-ROM. The software installation program creates a directory on your hard drive for the SFU32 and copies all necessary files to it. By default, the drive and directory is C:\AB\PB1400E\SFU32. You can change this default.

To install SFU32:

1. Start Windows 2000(SP2)/NT/95. If you're already in Windows, close all open Windows applications.
2. Place the CD-ROM in the drive.

The CD-ROM should begin to run automatically. If it does not start automatically, choose Run from the Start button and select setup.exe from the CD-ROM drive; or select setup.exe from Windows Explorer.

3. In the Welcome dialog box, choose Next.
4. If you are installing on Windows 95, the Select Version dialog box appears. Select Version 5, and then choose Next.

If you are installing on Windows NT, the Select Version dialog box does not appear. Version 5 is automatically selected.

5. In the Choose Applications dialog box, choose Serial Firmware Upgrade as the application you want to install. You can choose more than one application to install. Choose Next.

6. In the registration window, enter your user name, company name, and serial number. You can obtain registration information from the software registration card that is in your PanelBuilder 1400e package (A-B Catalog Number 2711E-ND1). Choose Next.
7. In the confirmation window, verify the user information you have entered. Select Yes to proceed or No to edit the user information.
8. In the Welcome dialog box for the Serial Firmware Upgrade Utility, it recommends that you close all open Windows applications. If you have done that, choose Next.
9. Choose the drive and directory in which the SFU32 will be installed. By default, this is C:\AB\PB1400E\SFU32. To change the destination drive or directory, type the new drive and/or directory in the Program Files field. Choose Next.
10. Choose the program folder (program group) in which you want to install the SFU32 icons, which includes a Readme file icon, the Upgrade Utility icon, and an Uninstall icon. By default, the icons are installed in the PanelBuilder 1400e program folder. Choose Next.
11. The setup utility shows a summary of the choices you made in the preceding dialog boxes. To make any changes, choose the Back button. Otherwise, choose Next to begin the installation.

Do not cancel the installation while it is in progress. If you want to undo the installation, let the installation finish, and then use the Uninstall Serial Firmware Upgrade Utility to remove all the installed files and to update the registration.
12. When the installation is complete, remove the CD-ROM from the drive.

Installing SFU from “PanelBuilder 1400e” (2711-ND1) CD-ROM onto Windows 95 or Windows 3.x

The Serial Firmware Upgrade Utility Version 3 (SFU) software is provided on CD-ROM. The software installation program creates a directory on your hard drive for the Serial Firmware Upgrade Utility and copies all necessary files to it. By default, the drive and directory is C:\AB\PB1400e\SFU. You can change this default.

To install SFU:

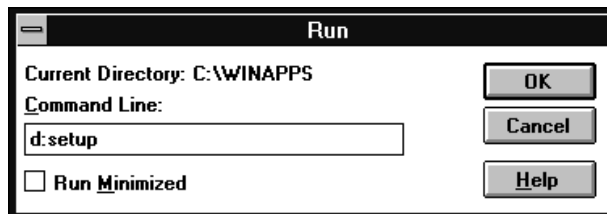
1. Start Windows 95 or 3.x. If you're already in Windows, close all open Windows applications.
2. Place the CD-ROM in the drive.

The CD-ROM should begin to run automatically. If it does not start automatically and you are running on Windows 95, choose Run from the Start button and select setup.exe from the CD-ROM drive; or select setup.exe from Windows Explorer.

If the CD-ROM does not start automatically and you are running on Windows 3.x, choose Run from the File menu. In the Run windows, type:

```
d:setup
```

where d is the drive containing the Serial Firmware Upgrade Utility CD-ROM, and press Enter.



3. In the Welcome dialog box, choose Next.
4. If you are installing on Windows 95, the Select Version dialog box appears. Choose Version 3, and then choose Next.

If you are installing on Windows 3.x, the Select Version dialog box does not appear. Version 3 is automatically selected.
5. In the Choose Applications dialog box, choose Serial Firmware Upgrade as the application you want to install. You can choose more than one application to install. Choose Next.
6. In the Welcome dialog box for the Serial Firmware Upgrade Utility, it recommends that you close all open Windows applications. If you have done that, choose Next.
7. Choose the drive and directory in which the Serial Firmware Upgrade Utility will be installed. By default, this is C:\AB\PB1400e\SFU. To change the destination drive or directory, type the new drive and/or directory in the Directory field. Choose Next.
8. Choose the program folder (program group) in which you want to install the SFU icons, which includes a Readme file icon, the Utility file icon, and an Uninstall icon. By default, the icons are installed in the PanelBuilder 1400e program folder. Choose Next.
9. Follow the setup instructions as they appear on your screen.

To complete the setup, enter any required information when prompted.

Do not cancel the installation while it is in progress. If you want to cancel the installation, let the installation finish, and then use the Uninstall Serial Firmware Upgrade Utility to remove all the installed files.

10. When the installation is complete, remove the CD-ROM from the drive.

For information on how to start and exit from the Serial Firmware Upgrade Utility Version 3 (SFU), see Appendix D in the *PanelView 1000e and 1400e Operator Terminals User Manual* (A-B Publication Number 2711E-821).

Installing SFU32 from the “PanelBuilder 1400e Transfer Utilities” CD onto Windows 2000(SP2)/NT/95

The Serial Firmware Upgrade Utility Version 5 (SFU32) software is provided on CD.

The software installation program creates a directory on your hard drive for the SFU32 and copies all necessary files to it. By default, the drive and directory is C:\AB\PB1400E\SFU32. You can change this default.

To install SFU32:

1. Start Windows 2000(SP2)/NT/95. If you're already in Windows, close all open Windows applications.
2. Insert the CD in the drive.
3. Browse the CD for file “SFU_V5”. Browse Disk 1. Run “SETUP.exe”.
4. Close all applications, and then choose Next. The Serial Firmware Upgrade Utility Installation Program runs automatically.
5. Enter the required information.
6. Choose the drive and directory in which the SFU32 will be installed. By default, this is C:\AB\PB1400E\SFU32. To change the destination drive or directory, type the new drive and/or directory in the Program Files field. Choose Next.
7. Choose the program folder (program group) in which you want to install the SFU32 icons, which includes a Readme file icon, the Upgrade Utility icon, and an Uninstall icon. By default, the icons are installed in the PanelBuilder 1400e program folder. Choose Next.
8. Follow the setup instructions as they appear on your screen.

To complete the setup, enter any required information and insert the second disk when prompted.

Do not cancel the installation while it is in progress. If you want to undo the installation, let the installation finish, then use the Uninstall Serial Firmware Upgrade Utility to remove all the installed files and to update the registration.

9. When the installation is complete, remove the disk from the drive.

Installing SFU from the “PanelBuilder 1400e Transfer Utilities” CD onto Windows 95 or Windows 3.x

The Serial Firmware Upgrade Utility Version 3 (SFU) software is provided on CD.

The software installation program creates a directory on your hard drive for the SFU and copies all necessary files to it. By default, the drive and directory is C:\AB\PB1400E\SFU. You can change this default.

To install SFU:

1. Start Windows 95/3.x. If you're already in Windows, close all open Windows applications.
2. Insert the CD in the drive.
3. Browse the CD for file “SFU_V3”. Browse Disk 1. Run “SETUP.exe”.
4. Close all applications, and then choose Next. The Serial Firmware Upgrade Utility Installation Program runs automatically.
5. Enter the required information.
6. Choose the drive and directory in which the SFU will be installed. By default, this is C:\AB\PB1400E\SFU. To change the destination drive or directory, type the new drive and/or directory in the Program Files field. Choose Next.
7. Choose the program folder (program group) in which you want to install the SFU icons, which includes a Readme file icon, the Upgrade Utility icon, and an Uninstall icon. By default, the icons are installed in the PanelBuilder 1400e program folder. Choose Next.
8. Follow the setup instructions as they appear on your screen.

To complete the setup, enter any required information and insert the second disk when prompted.

Installing Additional Communication Drivers

Do not cancel the installation while it is in progress. If you want to undo the installation, let the installation finish, then use the Uninstall Serial Firmware Upgrade Utility to remove all the installed files and to update the registration.

9. When the installation is complete, remove the CD from the drive.

The Serial Firmware Upgrade Utility supports additional communication drivers besides the core drivers (Remote I/O, DH+, ControlNet KTCS, and ControlNet KTCX). If an additional driver is required, a disk that contains an install and uninstall program is supplied in the kit for that network driver.

To install an additional driver:

1. Close the Serial Firmware Upgrade Utility.
2. Place the disk in the drive.
3. On Windows NT or Windows 95, click the Start button and then choose Run.

On Windows 3.x, choose Run from the File menu of Program Manager or File Manager.

4. In the Run window, type:

```
a:setup OR b:setup
```

5. Follow the installation instructions as they appear on your screen.

When the registration window appears, enter the registration information that is provided in the kit for the network driver.

6. When the installation is complete, remove the disk from the drive.
7. Start the Serial Firmware Upgrade Utility. The new driver is displayed in the list of drivers.

Starting the PanelView Serial Firmware Upgrade Utility

This section describes how to start the Serial Firmware Upgrade Utility Version 5 (SFU32) from Windows NT or Windows 95. The functionality of the serial firmware upgrade utility is the same for Windows NT and Windows 95.

To start the Serial Firmware Upgrade Utility from Windows NT or Windows 95:

1. Click the Start button on the taskbar.
2. Choose Programs, and then choose PanelBuilder 1400e, or the folder you specified when you installed the program.
3. Choose Serial Firmware Upgrade Utility.

Performing a Serial Firmware Upgrade

After starting the Serial Firmware Upgrade Utility, the Serial Firmware Upgrade Utility dialog box appears.

To perform a serial firmware upgrade:

1. Choose Upgrade Parameters.
2. Select Communications Drivers.
3. To initiate the PanelView firmware upgrade, click Start Upgrade.

For more information on how to configure parameters and initiate a firmware upgrade, press F1 to open online help.

During the firmware upgrade, the host computer displays status information. If the upgrade is successful, the following message appears and the PanelView terminal reboots:

```
Terminal firmware upgraded successfully.
```

If the upgrade fails, a message appears to explain why the upgrade failed. To prevent firmware upgrade failure:

- check the connection from the host computer to the PanelView terminal
- if you are upgrading the firmware via the memory card, check that the PCMCIA memory card is inserted into the PanelView terminal
- check that the PanelView terminal is set to Configuration mode and the Upgrade Firmware screen is displayed.

Exiting from the PanelView Serial Firmware Upgrade Utility

When you have finished transferring the firmware, you can exit the Serial Firmware Upgrade Utility.

To exit from the Serial Firmware Upgrade Utility:

- ▶ Click the Exit button in the dialog box.

Reach us now at www.rockwellautomation.com

Wherever you need us, Rockwell Automation brings together leading brands in industrial automation including Allen-Bradley controls, Reliance Electric power transmission products, Dodge mechanical power transmission components, and Rockwell Software. Rockwell Automation's unique, flexible approach to helping customers achieve a competitive advantage is supported by thousands of authorized partners, distributors and system integrators around the world.

Americas Headquarters, 1201 South Second Street, Milwaukee, WI 53204, USA, Tel: (1) 414 382-2000, Fax: (1) 414 382-4444
European Headquarters SA/NV, avenue Herrmann Debroux, 46, 1160 Brussels, Belgium, Tel: (32) 2 663 06 00, Fax: (32) 2 663 06 40
Asia Pacific Headquarters, 27/F Citicorp Centre, 18 Whitfield Road, Causeway Bay, Hong Kong, Tel: (852) 2887 4788, Fax: (852) 2508 1846



AB PLCs