



Internal Compact Flash Card Exchange Program

Catalog Number(s): 2711P-RW1, 2711P-RW2, 2711P-RW3, 6189-RW2, 6189-RW3, 6189-RW4

Inside . . .

For	See Page
About this Publication	1
Important User Information	2
Check the Manufacturer Date Code	3
Check Device for Additional Program Components	3
Verify the Version of RSView ME on the Terminal	4
Replace the Internal Compact Flash Card	5
Copy Application Files to the Replacement Compact Flash Card	5
Verify Terminal Operation	6
Additional Resources	7

About this Publication

This document provides instructions on how to replace internal compact flash cards in PanelView Plus or VersaView CE logic modules with a Manufacturer Date Code (mmyy) of January 2005 (0105) or earlier.

- If the date is 0205 or later, NO action is recommended.
- If the date is prior to 0205, replacement of the internal compact flash card is recommended. Follow these replacement instructions and receive a 100% refund on the purchase price of the replacement card.

Spare Allen-Bradley Parts

Important User Information

Solid state equipment has operational characteristics differing from those of electromechanical equipment. *Safety Guidelines for the Application, Installation and Maintenance of Solid State Controls* (Publication SGI-1.1 available from your local Rockwell Automation sales office or online at <http://www.rockwellautomation.com/literature>) describes some important differences between solid state equipment and hard-wired electromechanical devices. Because of this difference, and also because of the wide variety of uses for solid state equipment, all persons responsible for applying this equipment must satisfy themselves that each intended application of this equipment is acceptable.

In no event will Rockwell Automation, Inc. be responsible or liable for indirect or consequential damages resulting from the use or application of this equipment.

The examples and diagrams in this manual are included solely for illustrative purposes. Because of the many variables and requirements associated with any particular installation, Rockwell Automation, Inc. cannot assume responsibility or liability for actual use based on the examples and diagrams.

No patent liability is assumed by Rockwell Automation, Inc. with respect to use of information, circuits, equipment, or software described in this manual.

Reproduction of the contents of this manual, in whole or in part, without written permission of Rockwell Automation, Inc. is prohibited.

Throughout this manual, when necessary we use notes to make you aware of safety considerations.

WARNING



Identifies information about practices or circumstances that can cause an explosion in a hazardous environment, which may lead to personal injury or death, property damage, or economic loss.

IMPORTANT

Identifies information that is critical for successful application and understanding of the product.

ATTENTION



Identifies information about practices or circumstances that can lead to personal injury or death, property damage, or economic loss. Attentions help you:

- identify a hazard
 - avoid a hazard
 - recognize the consequence
-

SHOCK HAZARD



Labels may be located on or inside the equipment (e.g., drive or motor) to alert people that dangerous voltage may be present.

BURN HAZARD



Labels may be located on or inside the equipment (e.g., drive or motor) to alert people that surfaces may be at dangerous temperatures.

Check the Manufacturer Date Code

1. Check the Manufacturer Date Code on the logic module.



2. If the date is 0205 or later, NO action is required.
3. If the date is prior to 0205, go to the next section.

Check Device for Additional Program Components

To simplify the installation of the replacement compact flash card, please check for the following components on your PanelView Plus or VersaView CE device:

- KEPServer drivers
- Extra fonts
- ActiveX components
- Accessory programs or files

You will need to reload these components after copying your current application files to the replacement compact flash card.

Spare Allen-Bradley Parts

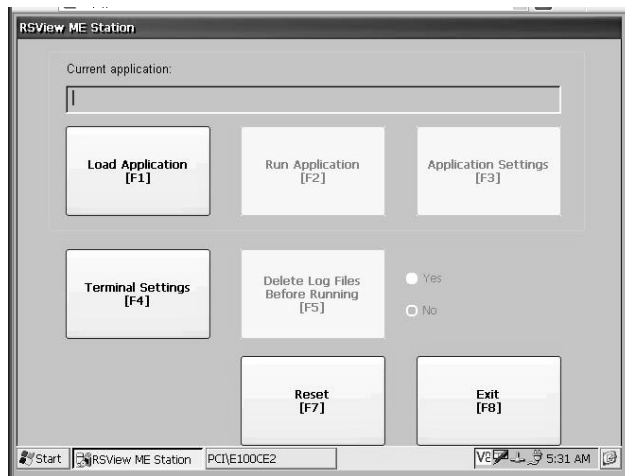
Verify the Version of RSVIEW ME on the Terminal

Determine the version of RSVIEW ME loaded on your PanelView Plus or VersaView device. The replacement, internal compact flash card requires RSVIEW ME version 3.10 or later on the terminal.

IMPORTANT

The replacement, internal compact flash card does not include firmware changes that were required in the 3.00 to 3.xx update. For details, refer to the Machine Edition Getting Started guide on the RSVIEW Machine Edition Firmware Upgrade CD for PanelView Plus and VersaView CE terminals, Cat. No. 2711P-RU310 or 6189-RU310.

1. Access configuration mode on your PanelView Plus or VersaView CE device and select Terminal Settings.



2. From the Terminal Settings screen, select System Information>About RSVIEW ME Station to check the firmware version.



TIP

If you cannot access configuration mode, refer to technote A55863468 in the Rockwell Automation Knowledgebase. Go to www.rockwellautomation.com and access Services and Support>Get Support Now>Knowledgebase.

3. If the firmware version is 3.10.00 or later, replace the internal compact flash card in the logic module with the replacement card and proceed to the next section.

If the firmware version is not 3.10.00 or later, upgrade the terminal firmware before replacing the internal compact flash card.

Replace the Internal Compact Flash Card

Refer to publication 2711P-IN004, in the compact flash card box for details on installing the replacement internal compact flash card in the logic module. The document is titled Logic Module, Internal Compact Flash, and RAM for PanelView Plus and VersaView CE Terminals.

1. Replace the internal compact flash card in the logic module.
2. Power on the terminal.

Copy Application Files to the Replacement Compact Flash Card

This procedure copies the .mer application files from the old internal compact flash card to the replacement compact flash card now installed in the logic module.

1. Load the old compact flash card into the external card slot of the logic module.

This is the card you just removed from the logic module.

2. From the terminal's configuration mode, select Terminal Settings.
3. Select File Management>Copy Files>Copy Applications.



4. From the Copy Applications screen, use the Source button to select External Storage.

This is the card slot containing the compact flash card loaded in step 1. The original .mer files are on this card.

5. Select the .mer files that you want to copy from the old card to the replacement compact flash card installed in the logic module, and then select the Destination button.

Spare Allen-Bradley Parts

6. Select Internal Storage and then the Copy button to copy the selected .mer files from the old card to the replacement, internal compact flash card.



If KEPServer communication drivers are used in the original application, load these separately using the Firmware Upgrade Wizard (FUW) that comes with RSView Studio. To load KEPServer drivers on the terminal, use the same FUW version as the Machine Edition version that is on the replacement card. For assistance with the FUW, refer to the help in the RSView Studio software.

If additional files or Active X components were loaded with the original application of VersaView CE terminals, load these files now. Many of these files and associated instructions are included on the Accessory CD that ships with each terminal. Please contact your Rockwell Automation salesperson or distributor for more information on the latest version of the Accessory CD.

Verify Terminal Operation

1. Turn on power to the PanelView Plus or VersaView CE device.
2. Launch the .mer application file.
3. Verify that the application operates correctly.
4. You can optionally change the RSView ME revision.
5. If installing additional programs or components, please wait 15 seconds before reapplying power to the unit.
6. If you experience communication problems, the .mer file you copied from the old compact flash card is probably corrupt. Download the original .mer file to correct this problem.

Additional Resources

For additional information, refer to these publications.

Publication Number	Publication
2711P-IN004	Logic Module, Internal Compact Flash, RAM
2711P-TD002A-FR-P	Internal Compact Flash Exchange Program, French
2711P-TD002A-DE-P	Internal Compact Flash Exchange Program, Deutch
2711P-TD002A-ES-P	Internal Compact Flash Exchange Program, Spanish
2711P-TD002A-IT-P	Internal Compact Flash Exchange Program, Italian
2711P-TD002A-PT-P	Internal Compact Flash Exchange Program, Portuguese

You can download these publications from the Rockwell Automation website:

<http://www.rockwellautomation.com/literature>

Allen-Bradley, PanelView Plus, and VersaView are trademarks of Rockwell Automation, Inc.

Trademarks not belonging to Rockwell Automation are the property of their respective companies.

Spare Allen-Bradley Parts

Rockwell Automation Support

Rockwell Automation provides technical information on the web to assist you in using its products. At <http://support.rockwellautomation.com>, you can find technical manuals, a knowledge base of FAQs, technical and application notes, sample code and links to software service packs, and a MySupport feature that you can customize to make the best use of these tools.

For an additional level of technical phone support for installation, configuration and troubleshooting, we offer TechConnect Support programs. For more information, contact your local distributor or Rockwell Automation representative, or visit <http://support.rockwellautomation.com>.

Installation Assistance

If you experience a problem with a hardware module within the first 24 hours of installation, please review the information that's contained in this manual. You can also contact a special Customer Support number for initial help in getting your module up and running:

United States	1.440.646.3223 Monday – Friday, 8am – 5pm EST
Outside United States	Please contact your local Rockwell Automation representative for any technical support issues.

New Product Satisfaction Return

Rockwell tests all of its products to ensure that they are fully operational when shipped from the manufacturing facility. However, if your product is not functioning and needs to be returned:

United States	Contact your distributor. You must provide a Customer Support case number (see phone number above to obtain one) to your distributor in order to complete the return process.
Outside United States	Please contact your local Rockwell Automation representative for return procedure.

www.rockwellautomation.com

Power, Control and Information Solutions Headquarters

Americas: Rockwell Automation, 1201 South Second Street, Milwaukee, WI 53204-2496 USA, Tel: (1) 414.382.2000, Fax: (1) 414.382.4444

Europe/Middle East/Africa: Rockwell Automation, Vorstlaan/Boulevard du Souverain 36, 1170 Brussels, Belgium, Tel: (32) 2 663 0600, Fax: (32) 2 663 0640

Asia Pacific: Rockwell Automation, Level 14, Core F, Cyberport 3, 100 Cyberport Road, Hong Kong, Tel: (852) 2887 4788, Fax: (852) 2508 1846