



# AdaptaScan Reader to a PLC-5 Using DH-485 Protocol with the 2760–RB Module and the 2760-SFC2 Protocol Cartridge

## Overview

The AdaptaScan-SN3, -SN5 or -SN8 bar code reader may be configured to communicate with the 2760-RB interface module via DH485 protocol, using the 2760-SFC2 protocol cartridge.

This document includes cable diagrams and configuration information for the AdaptaScan readers. It also includes an example PLC-5 program which is needed to establish communication from the PLC to the 2760-RB.

## Hardware Requirements

The following Allen-Bradley *hardware* is needed to use the procedure described in this application note:

- 2755-SN3, -SN5, or -SN8 AdaptaScan™ reader and related manuals.
- 2760-RB interface module in a 1771 rack with a PLC-5® processor
- 2760–SFC2 protocol cartridge
- Personal computer or VT 100 type terminal to configure the 2760-RB
- Appropriate cables to program the PLC-5 and to configure the 2760-RB interface module and the AdaptaScan reader. Refer to hardware manuals for cable requirements.
- Catalog Number 1784-KT or equivalent card installed in the computer to enable you to program the PLC-5.

## Software Requirements

The following Allen-Bradley *software* is needed to use the procedure described in this application note:

- Bulletin 6200 development software for the PLC-5, to run in the personal computer
- Terminal Emulation software for a personal computer, to configure the 2760-RB
- 2755-ASN Windows-Based Offline Program Software to configure the AdaptaScan reader

## Related Publications

This document refers to the following publications, which should be available for reference while working through this application note:

Publication Number	Title
1785-XXX	User Manual for your PLC-5
6200-XXX	Programming Manual for your PLC-5
2755-837	AdaptaScan Bar Code Readers Installation Manual
2755-838	AdaptaScan Configuration Software User Manual
2760-ND001	2760-RB User Manual
2760-2.19	2760-SFC2 Protocol Cartridge Manual

## PLC 5 Compatibility

Use the following table as a configuration guideline when using the examples shown in this document.

2760-RB In Use	PLC-5, -15, -25, etc.	New Generation PLC-5 (Series A, Rev. C or above only)
Series A, Rev. G or below	Follow example PLC program as shown on page 9.	Set BT Compatibility Bit S26/4 while in program mode. Use example PLC program shown on page 9.
Series A, Rev H or Above		Add ladder logic using IIN update of RB. BTR must be before 'BTW. Refer to page 10.

## Configuration

The 2760-RB configuration example includes sample configuration screens and DIP switch settings needed to establish communication with the AdaptaScan reader via RS-232. Other 2760-RB configuration features not used here are also available. See Publication 2760-ND001.

### PLC-5 processor DIP switches

Switch #	1	2	3	4	5	6	7	8
SW-1	on	on	on	on	on	on	on	off
SW-2	off	on	on	on	on	on	on	off
SW-3	on	on	off	off				

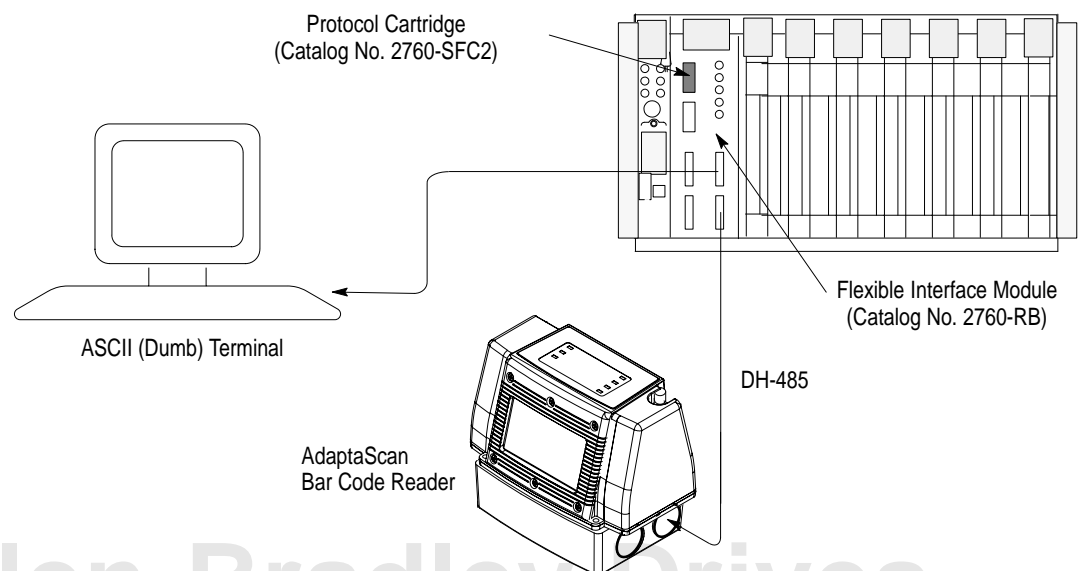
### I/O chassis backplane DIP switches

	1	2	3	4	5	6	7	8
	off	off	off	off	off	on	off	off

### 2760-RB module DIP switches

Switch #	1	2	3	4	5	6	7	8
SW-1	off	off	off	off	off	off	off	off
SW-2	off	off	off	off	off	off	off	off
SW-3	off	off	off	off				
SW-4	off	off	on	off				

The 2760-RB module is placed in the 1771 chassis in slot 0 next to the PLC. For this application, note that the AdaptaScan reader communicates through port 1 on the 2760-RB. A 1771-ASB module can also be used to communicate with the 2760-RB module over the chassis back plane to Remote I/O.



Allen-Bradley Drives

## PLC-5 Program

The sample ladder logic listing below instructs the PLC-5 to:

Rung 2:0 – Read AdaptaScan data from the 2760-RB module.

I:000	N7:0	BTR	
13	15	BLOCK TRANSFER READ	(EN)
		Rack	00 (DN)
		Group	0 (DN)
		Module	0
		Control block	N7:0 (ER)
		Data file	N7:100
		Length	0
		Continuous	N

[END OF FILE]

Press a function key.

(File 2: Rung 0) █

Rem Prog Forces:None Edits:None 5/40 File ADAPTARB

Change	Config	Return	Program	Documnt	Search	General	Data	Force	Edit
Mode	Display	to Menu	Dirctry			Utility	Monitor		
F1	F2	F3	F4	F5	F6	F7	F8	F9	F10

Refer to your PLC-5 user manual for detailed information on using the PLC-5 programming software.

The configuration screens for the 2760-RB should be entered exactly as shown. These parameters then need to be saved.

Both the AdaptaScan reader and the 2760-RB are configured to send and recognize the Carriage Return (Cr), Line Feed (Lf) characters to identify a message. When the 2760-RB senses information entering Port 1, it will look for the Cr, Lf. When it sees these trailers, it will Block transfer read (BTR) the preceding bar code data into the PLC program.

## Configuring the 2760-RB

1. Set all 2760-RB module DIP switches to Off.
2. Connect the smart cable to the Configuration port of the 2760-RB and the serial port of the computer.
3. Use the Terminal Emulator to send a “break sequence” to the 2760-RB:
  - A. Set the baud rate to 9600, 8 data bits, 1 stop bit, no parity, no flow control, and either COM1 or COM2 depending on the smart cable connection.
  - B. Program a function key to send the “break sequence” by using the ^\$B command.
  - C. Send the break sequence to call up the 2760-RB configuration menu.
4. Select menu item 3: Device port protocol names. Set to:  
 PORT1=COPYRIGHT 1989 ALLEN-BRADLEY COMPANY INC.  
 2760-SFC2 LAN SERIES A REVISION B (YES/NO)=YES
5. Select menu item 21: Identification numbers. Select:  
 RS485 LAN 2755-DM6 ASCII MODE 3, 0H (YES/NO)=YES
6. Select option 11: Configuration parameters. Set to:
  - SLOT TIME (NO. CHARS) (DEC 0 ... 255) = 15
  - INTER-CHAR TIME (NO. CHARS) (DEC 0 ... 255) = 7
  - IDLE TIME (NO. CHARS) (DEC 0 ... 255) = 3
  - RETRIES (DEC 0 ... 255) = 3
  - 19,200 BITS PER SECOND (YES/NO)=YES
  - BCD NODE NUMBERS (ENABLE/DISABLE)= ENABLE
  - BYTE SWAPPING (ENABLE/DISABLE)=ENABLE
  - RECEIVE MATRIXING (ENABLE/DISABLE)=DISABLE
  - MATRIX ADDRESS (HEX 0 ... FFFF) = 0
  - RE-ESTABLISH FREQUENCY (DEC 0 ... 255)=5
  - POLL FREQUENCY/DESTINATION [0] (HEX 0 ... FFFF)=5
  - POLL FREQUENCY/DESTINATION [1] (HEX 0 ... FFFF)=105
  - POLL FREQUENCY/DESTINATION [2] (HEX 0 ... FFFF)=5
  - POLL FREQUENCY/DESTINATION [3] (HEX 0 ... FFFF)=5
7. Verify that the 2760-RB is in rack 0, group 0 module 0.
8. Save the above configuration.

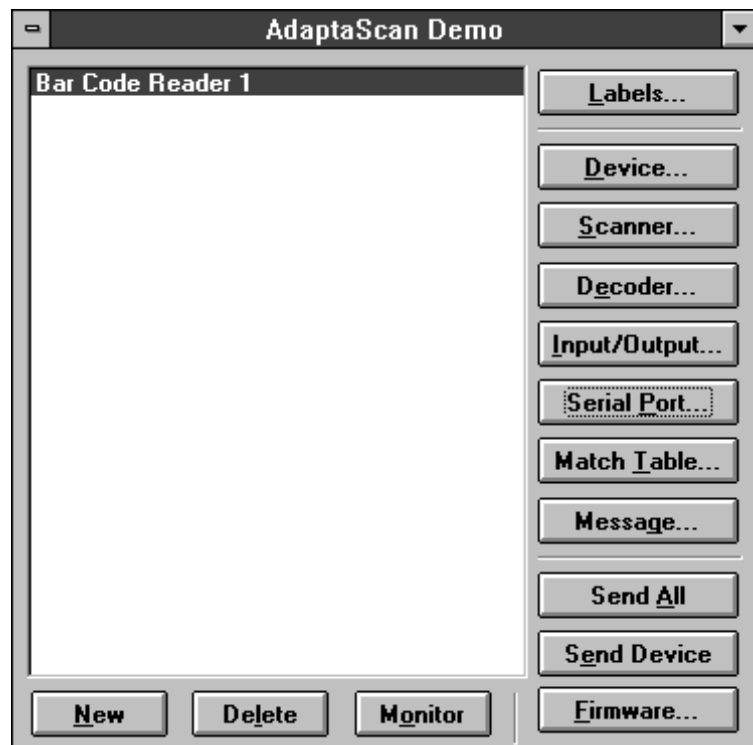
## 2755-SN3, -SN5, -SN8 AdaptaScan Reader Configuration

The AdaptaScan Offline Programmer configuration shows only the screens needed to establish communication to the 2760-RB module. Other AdaptaScan configuration parameters (selecting a bar code symbology, trigger methods, etc.) are beyond the scope of this document. See the AdaptaScan Configuration Software user manual.

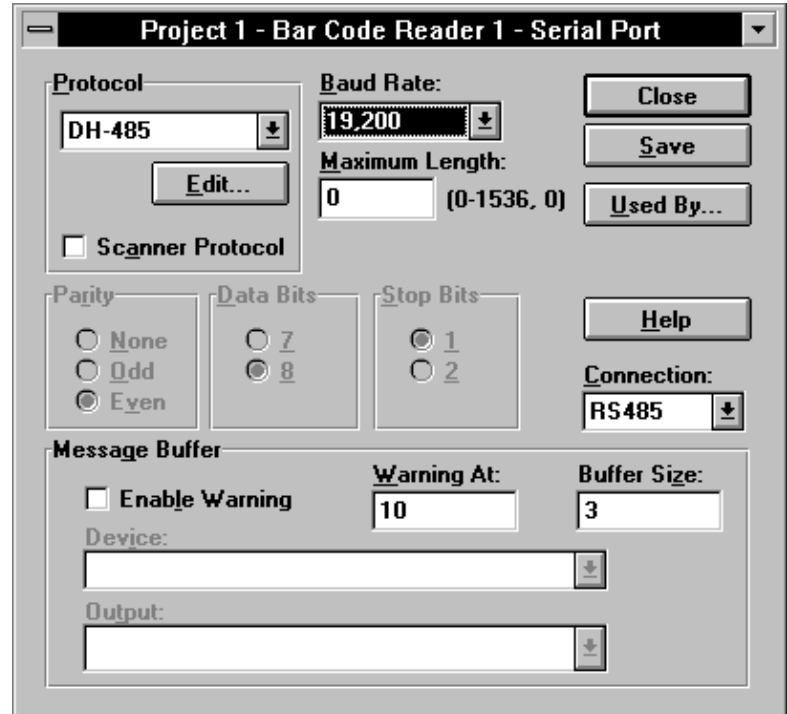
An example configuration for the 2755-SNx AdaptaScan Reader is illustrated below.

**Important:** The settings illustrated below represent only *part* of the configuration required for the AdaptaScan reader to work in a given application. Refer to the AdaptaScan Configuration Software user's manual for complete details on how to configure the reader for your application.

The Project dialog contains all the basic configuration options.



The Serial Port dialog defines communication parameters (RS-232/RS-485/RS-422) and protocols (ASCII, DH-485, DF1) for the reader's communication ports. Access it by selecting Serial Port in the Project dialog.



Select Edit to bring up the DH-485 dialog.

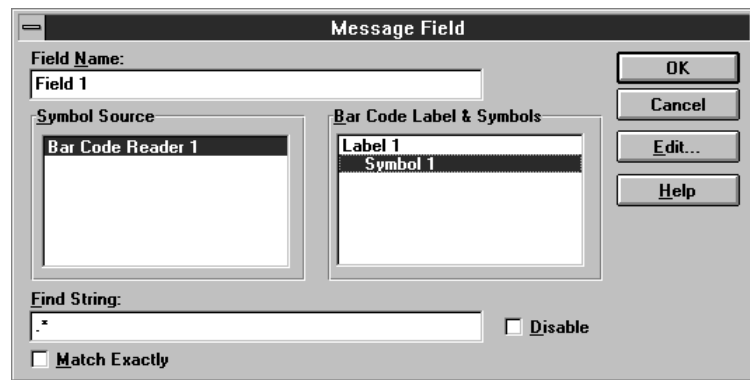


# Allen-Bradley Drives

The Message dialogs define the format and content of message data sent to the host by the reader when bar codes are decoded. This dialog is accessed by selecting Message in the Project dialog.

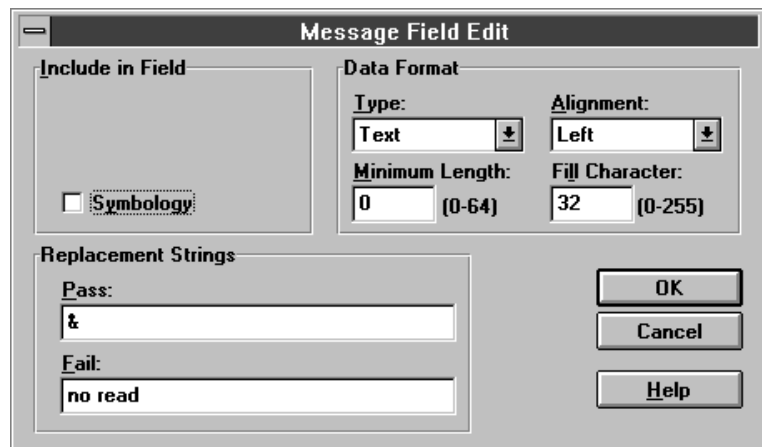


When Edit is selected in the New Message screen, the Message Field dialog appears:





And when Edit is selected in the Message Field screen, this dialog appears:



## Sample PLC Program

A sample PLC program appropriate for using a PLC 5/15/25 with a 2760 -RB module appears below.

```

| I:000      N7:0      N7:5      +-----+
+---] [-----]/[-----]/[-----]+Block Transfer Read  +---O---+
|          13        15        15      Rack                0
|                                          Group                1
|                                          Module               0
|                                          Control Block      N7:100
|                                          Length                0
|                                          Continuous            N
|                                          +-----+

Write
Data      N7:0      N7:5      +-----+
+---] [-----]/[-----]/[-----]+Block Transfer Write  +---O---+
|          15        15      Rack                0
|                                          Group                1
|                                          Module               0
|                                          Control Block      N7:5
|                                          Data File          N7:200
|                                          Length                0
|                                          Continuous            N
|                                          +-----+

```

Refer to your PLC-5 Instruction Reference Manual for detailed information on using the PLC-5 programming software.

# Allen-Bradley Drives



## Cabling

Cable 1 must be constructed to connect a configuration terminal to the 2760-RB module configuration port.

### Cable 1

2760-RB (config. port)		Dumb Terminal (VT-1000)
25-pin D male		25-pin D female
<b>Tx 2</b>	—————	<b>3 Rx</b>
<b>Rx 3</b>	—————	<b>2 Tx</b>
<b>GND 7</b>	—————	<b>7 GND</b>

Cable 2 must be constructed to connect the RS-485 port of the AdaptaScan Reader wiring base to Port 1 of the 2760-RB module.

### Cable 2

2760-RB Port 1		AdaptaScan Terminal Strip, Nema 4
25-pin D male		RS-485
<b>A</b>	—————	<b>TxA</b>
<b>B</b>	—————	<b>TxB</b>
<b>GND 7</b>	—————	<b>GND</b>

PLC-5 is a registered trademarks of Allen-Bradley Co., Inc., a Rockwell International Company  
AdaptaScan, PLC-5/30, PLC-5/40 and PLC-5/60 are trademarks of Allen-Bradley Co., Inc., a Rockwell International Company  
Microsoft Windows is a trademark of Microsoft Corporation



Allen-Bradley has been helping its customers improve productivity and quality for 90 years. A-B designs, manufactures and supports a broad range of control and automation products worldwide. They include logic processors, power and motion control devices, man-machine interfaces and sensors. Allen-Bradley is a subsidiary of Rockwell International, one of the world's leading technology companies.



With major offices worldwide.

Algeria • Argentina • Australia • Austria • Bahrain • Belgium • Brazil • Bulgaria • Canada • Chile • China, PRC • Colombia • Costa Rica • Croatia • Cyprus • Czech Republic • Denmark • Ecuador • Egypt • El Salvador • Finland • France • Germany • Greece • Guatemala • Honduras • Hong Kong • Hungary • Iceland • India • Indonesia • Israel • Italy • Jamaica • Japan • Jordan • Korea • Kuwait • Lebanon • Malaysia • Mexico • New Zealand • Norway • Oman • Pakistan • Peru • Philippines • Poland • Portugal • Puerto Rico • Qatar • Romania • Russia-CIS • Saudi Arabia • Singapore • Slovakia • Slovenia • South Africa, Republic • Spain • Switzerland • Taiwan • Thailand • The Netherlands • Turkey • United Arab Emirates • United Kingdom • United States • Uruguay • Venezuela • Yugoslavia

World Headquarters, Allen-Bradley, 1201 South Second Street, Milwaukee, WI 53204 USA, Tel: (1) 414 382-2000 Fax: (1) 414 382-4444