

What's New in IntelliCENTER ActiveX Version 2.0.3 Service Pack 2

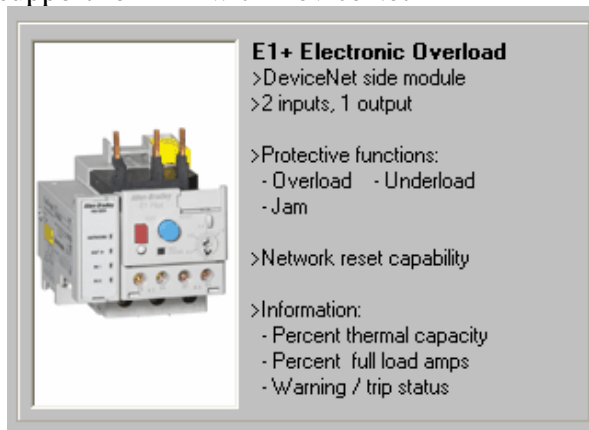
- Added new “Test Position” state for lineups with MV or IEC units.



- A wide selection of colors is now available for defining custom status colors.
- Corrected issues with the 16th bit being active for a parameter that uses enums.

What's New in IntelliCENTER ActiveX Version 2.0.3 Service Pack 1

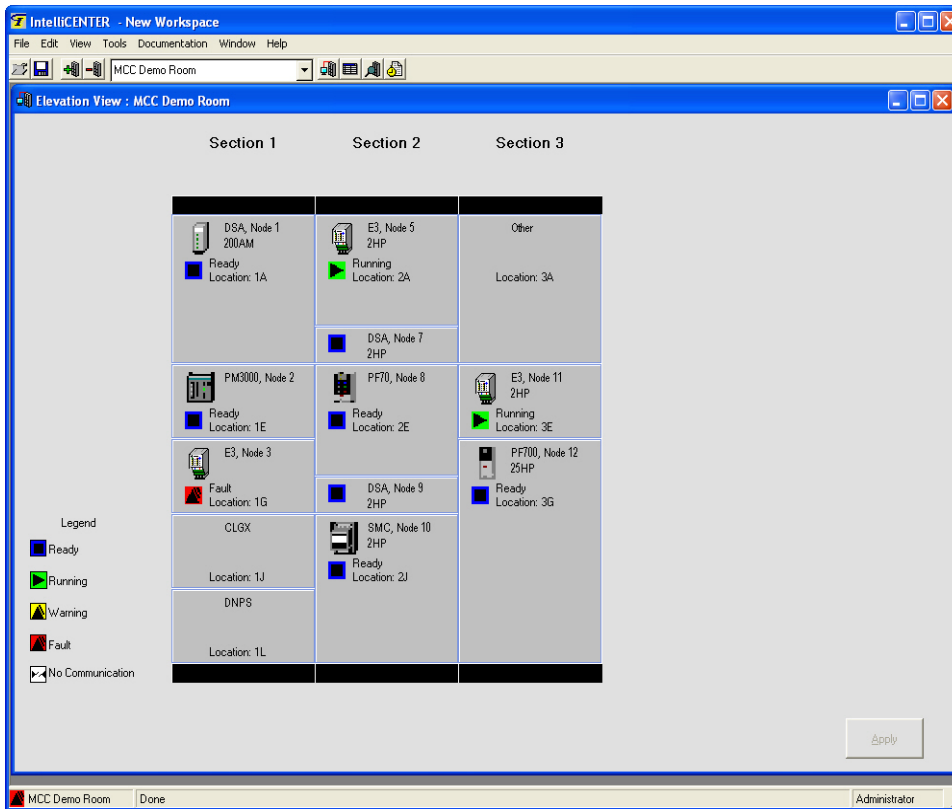
- Added support for E1+ with DeviceNet



- Improved the loading speed of Elevation and Monitor views
- Corrected anomalies with enumerated values in the Monitor View

What's New in IntelliCENTER ActiveX Software Version 2.0.3

New Elevation View:



- Icons show the type of DeviceNet product in each unit
- Drag and drop moving of units and sections
- Customizable device description and location fields
- Add and delete units

Enhanced Fault Logging:

- Faults and warning are now logged with the specific code or description. Diagnostics and troubleshooting just got easier.


ActiveX Updates:

- IntelliCENTER ActiveX objects now operate in other HMI applications.

New Products Supported:

IntelliCENTER software now supports E3's used in feeder applications. The description and parameters monitored have been tailored to this application.

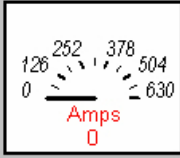
Monitor View : New Office Cabinet - Node 29; Net 0 Node 29



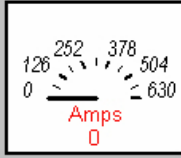
E3 Overload
Feeder Applications

- > Built-in DeviceNet
- > 4 inputs, 2 outputs
- > Phase current monitoring of 0.4 to 5000 Amp
- > Ground fault current detection
- > Additional protective features:
 - Overload, Underload
 - Phase loss
 - Current imbalance

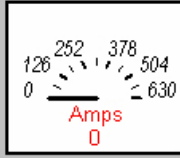
Real Time Data / Parameters



L1 Current



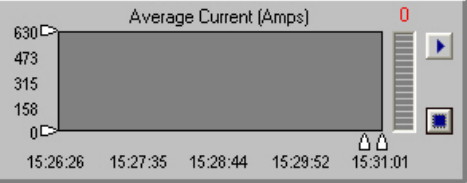
L2 Current



L3 Current

Real Time Data Trend

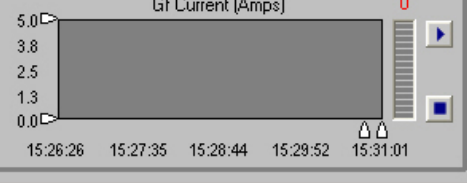
Average Current (Amps)



0

15:26:26
15:27:35
15:28:44
15:29:52
15:31:01

Gf Current (Amps)



0

15:26:26
15:27:35
15:28:44
15:29:52
15:31:01

IO / Parameters

Inputs / Outputs	Data
IN1 <input type="checkbox"/>	Warning Status <input type="text" value="None"/>
IN2 <input type="checkbox"/>	Trip Status <input type="text" value="None"/>
IN3 <input type="checkbox"/>	Gf Current <input type="text" value="0 Amps"/>
IN4 <input type="checkbox"/>	Trip Log 0 <input type="text" value="PTC"/>
OUTA <input type="checkbox"/>	
OUTB <input type="checkbox"/>	
Parameters	
	Gf Warn Level <input type="text" value="2 Amps"/>
	Gf Trip Level <input type="text" value="2.5 Amps"/>
	Trip Enable <input type="text" value="Multiple"/>
	Warning Enable <input type="text" value="Multiple"/>