

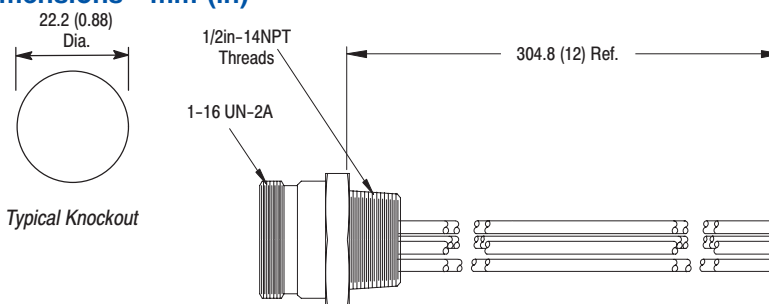


7-Pin Mini-Plus Female Receptacle

**Specifications**

<b>Receptacle Shell</b>	Machined anodized aluminum with clear sealant
<b>Connector Insert</b>	PVC
<b>Contacts</b>	Gold-plated machined brass (per ASTM B-16)
<b>Wire Insulation Cable Approvals</b>	Oil-resistant PVC, 16AWG stranded copper, 600V UL recognized and CSA certified
<b>Temperature</b>	-30°C to +105°C (-22°F to +221°F)

**Dimensions—mm (in)**



**Features**

- 16AWG conductors
- Female bulkhead receptacles
- 7- and 8-pin configurations
- 1/2in-14NPT threads
- UL recognized and CSA certified

**Product Selection**



Face View of Female	Wire Color	Wire Rating	Length—m (ft)	Panel Mount Threads	Catalog Number
	1 White/Black Tr 2 Black 3 White 4 Red 5 Orange 6 Blue 7 Green	16AWG 600V 7A	0.3 (1)	1/2in-14NPT	888N-F7AF1-1F
	1 Orange 2 Blue 3 White/Black Tr 4 Black 5 White 6 Red 7 Green 8 Red/Black Tr				888N-F8AF1-1F
Mounting nuts for 1/2in-14NPT threaded receptacles are available in bags of 10 pieces.					889A-U1NUT-10
Flat, sealing washers for 1/2in-14NPT threaded receptacles are available in bags of 10 pieces.					889A-U1FSL-10

# Receptacles, Male Mini-Plus Style



7-Pin Mini-Plus Male Receptacle

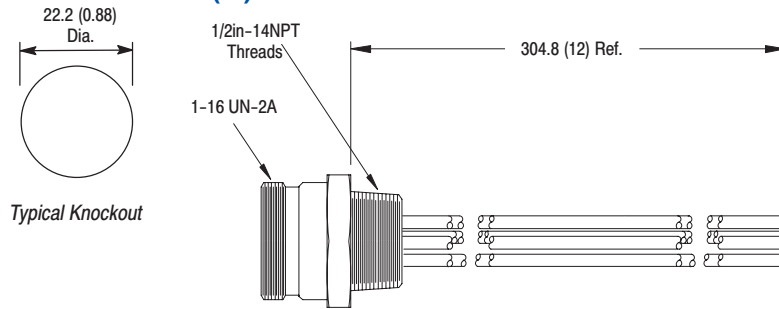
### Specifications

<b>Receptacle Shell</b>	Machined anodized aluminum with clear sealant
<b>Connector Insert</b>	PVC
<b>Contacts</b>	Gold-plated machined brass (per ASTM B-16)
<b>Wire Insulation Cable Approvals</b>	Oil-resistant PVC, 16AWG stranded copper, 600V UL recognized and CSA certified
<b>Temperature</b>	-30°C to +105°C (-22°F to +221°F)

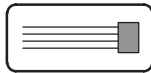
### Features

- 16AWG conductors
- Male bulkhead receptacles
- 7- and 8-pin configurations
- 1/2in-14NPT threads
- UL recognized and CSA certified

### Dimensions—mm (in)



### Product Selection



Face View of Male	Wire Color	Wire Rating	Length—m (ft)	Panel Mount Threads	Catalog Number
	1 White/Black Tr 2 Black 3 White 4 Red 5 Orange 6 Blue 7 Green	16AWG 600V 7A	0.3 (1)	1/2in-14NPT	888N-M7AF1-1F
	1 Orange 2 Blue 3 White/Black Tr 4 Black 5 White 6 Red 7 Green 8 Red/Black Tr				888N-M8AF1-1F
Mounting nuts for 1/2in-14NPT threaded receptacles are available in bags of 10 pieces.					889A-U1NUT-10
Flat, sealing washers for 1/2in-14NPT threaded receptacles are available in bags of 10 pieces.					889A-U1FSL-10

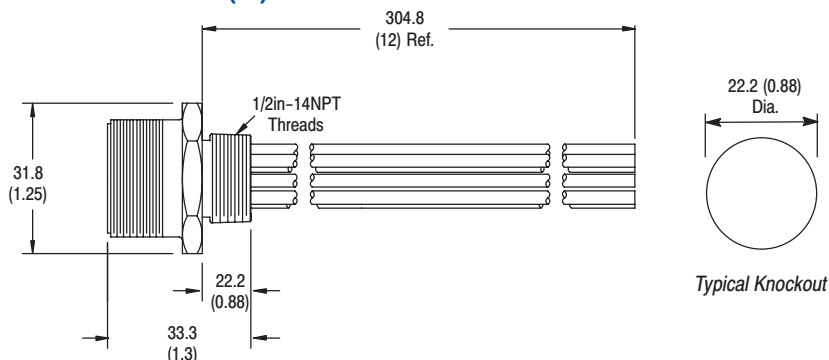


12-Pin Mini-Plus Female Receptacle

**Specifications**

<b>Receptacle Shell</b>	Machined anodized aluminum with clear sealant
<b>Connector Insert</b>	PVC
<b>Contacts</b>	Gold-plated machined brass (per ASTM B-16)
<b>Wire Insulation</b>	Oil-resistant PVC, 16AWG stranded copper, 600V, UL recognized and CSA certified
<b>Temperature</b>	-30°C to +105°C (-22°F to +221°F)

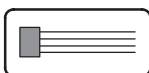
**Dimensions—mm (in)**



**Features**

- 16AWG conductors
- Female bulkhead receptacles
- 9-, 10- and 12-pin configurations
- 1/2in-14NPT threads
- UL recognized and CSA certified

**Product Selection**



Face View of Female	Wire Color	Wire Rating	Length—m (ft)	Panel Mount Threads	Catalog Number
	1 Orange 2 Blue 3 Red/Black Tr 4 Green/Black Tr 5 White 6 Red 7 Green 8 White/Black Tr 9 Black	16AWG 600V 7A	0.3 (1)	1/2in-14NPT	888N-F9AF1-1F
	1 Orange 2 Blue 3 White/Black Tr 4 Red/Black Tr 5 Green/Black Tr 6 Orange/Black Tr 7 Red 8 Green 9 Black 10 White				888N-F10AF1-1F
	1 Orange 2 Blue 3 White/Black Tr 4 Red/Black Tr 5 Green/Black Tr 6 Orange/Black Tr 7 Blue/Black Tr 8 Black/White Tr 9 Green 10 Red 11 White 12 Black				888N-F12AF1-1F
Mounting nuts for 1/2in-14NPT threaded receptacles are available in bags of 10 pieces.					889A-U1NUT-10
Flat, sealing washers for 1/2in-14NPT threaded receptacles are available in bags of 10 pieces.					889A-U1FSL-10

# Receptacles, Male Mini-Plus Style

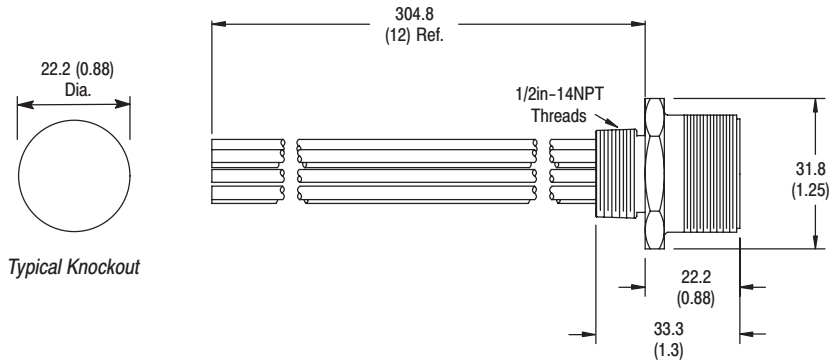


12-Pin Mini-Plus Male Receptacle

## Specifications

<b>Receptacle Shell</b>	Machined anodized aluminum with clear sealant
<b>Connector Insert</b>	PVC
<b>Contacts</b>	Gold-plated machined brass (per ASTM B-16)
<b>Wire Insulation Cable Approvals</b>	Oil-resistant PVC, 16AWG stranded copper, 600V UL recognized and CSA certified
<b>Temperature</b>	-30°C to +105°C (-22°F to +221°F)

## Dimensions—mm (in)



## Features

- 16AWG conductors
- Male bulkhead receptacles
- 9-, 10- and 12-pin configurations
- 1/2in-14NPT threads
- UL recognized and CSA certified



## Product Selection

Face View of Male	Wire Color	Wire Rating	Length—m (ft)	Panel Mount Threads	Catalog Number
	1 Orange 2 Blue 3 Red/Black Tr 4 Green/Black Tr 5 White 6 Red 7 Green 8 White/Black Tr 9 Black				<b>888N-M9AF1-1F</b>
	1 Orange 2 Blue 3 White/Black Tr 4 Red/Black Tr 5 Green/Black Tr 6 Orange/Black Tr 7 Red 8 Green 9 Black 10 White	16AWG 600V 7A	0.3 (1)	1/2in-14NPT	<b>888N-M10AF1-1F</b>
	1 Orange 2 Blue 3 White/Black Tr 4 Red/Black Tr 5 Green/Black Tr 6 Orange/Black Tr 7 Blue/Black Tr 8 Black/White Tr 9 Green 10 Red 11 White 12 Black				<b>888N-M12AF1-1F</b>