



DC Micro Female Receptacle

Specifications

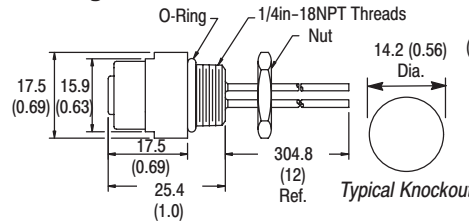
Receptacle Shell	Black anodized machined aluminum
Connector Insert	Nylon
Contacts	Machined brass with gold over nickel plating
Wire Insulation	Oil-resistant PVC, 22AWG stranded copper, 300V, UL recognized and CSA certified
Temperature	-20°C to +105°C (-4°F to +221°F)

Features

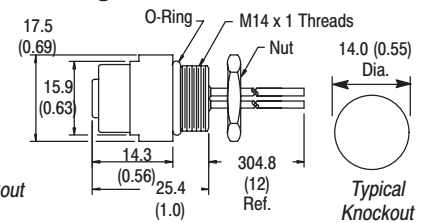
- 22AWG conductors
- Female bulkhead receptacles
- 3- or 4-wire configuration
- 1/4in-18NPT, or M14 x 1 threads
- UL recognized and CSA certified

Dimensions—mm (in)

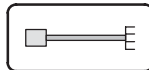
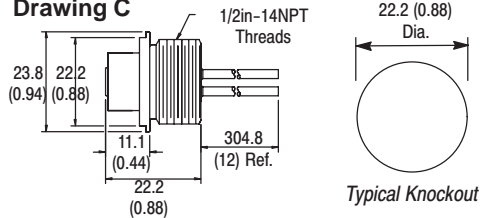
Drawing A



Drawing B



Drawing C



Product Selection

Face View of Female	Wire Color	Wire Rating	Length—m (ft)	Panel Mount Threads	Drawing	Catalog Number
	1 Brown 2 N/C 3 Blue 4 Black	22AWG 300V 3A	0.3 (1)	1/4in-18NPT	A	888D-F3AC2-0M3
			1 (3.3)			888D-F3AC2-1
			0.3 (1)	1/2in-14NPT	C	888D-F3AC1-0M3
			1 (3.3)			888D-F3AC1-1
	1 Brown 2 White 3 Blue 4 Black		0.3 (1)	M14 x 1	B	888D-F3AC6-0M3
			0.3 (1)	1/4in-18NPT	A	888D-F4AC2-0M3
			1 (3.3)			888D-F4AC2-1
			0.3 (1)	1/2in-14NPT	C	888D-F4AC1-0M3
1 (3.3)	888D-F4AC1-1					
	1 Brown 2 White 3 Blue 4 Black 5 Grey	0.3 (1)	1/2in-14NPT	C	888D-F5AC1-0M3	
		1 (3.3)			888D-F5AC1-1	
		0.3 (1)	M14 x 1	B	888D-F5AC6-0M3	
		0.3 (1)			888D-F5AC6-0M3	
Mounting nuts for 1/2in-14NPT threaded receptacles are available in bags of 10 pieces.						889A-U1NUT-10
Flat, sealing washers for 1/2in-14NPT threaded receptacles are available in bags of 10 pieces.						889A-U1FSL-10

Allen-Bradley PLCs

Receptacles, Male DC Micro Style



DC Micro Male Receptacle

Specifications

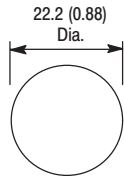
Receptacle Shell	Black anodized machined aluminum
Connector Insert	Nylon
Contacts	Machined brass with gold over nickel plating
Wire Insulation	Oil-resistant PVC, 22AWG stranded copper, 300V, UL recognized and CSA certified
Temperature	-20°C to +105°C (-4°F to +221°F)

Features

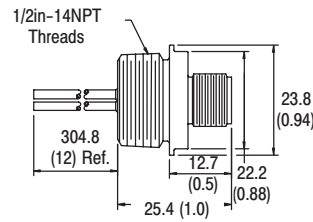
- 22AWG conductors
- Male bulkhead receptacles
- 3- or 4-wire configuration
- 1/2in-14NPT or M14 x 1 threads
- UL recognized and CSA certified

Dimensions—mm (in)

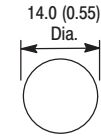
Drawing A



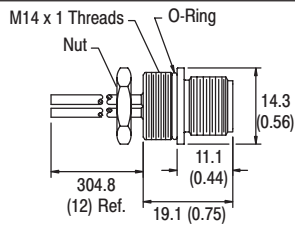
Typical Knockout



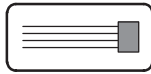
Drawing B



Typical Knockout



Product Selection



Face View of Male	Wire Color	Wire Rating	Length—m (ft)	Panel Mount Threads	Drawing	Catalog Number
	1 Brown 2 N/C 3 Blue 4 Black	22AWG 300V 3A	0.3 (1)	1/2in-14NPT	A	888D-M3AC1-0M3
			1 (3.3)			888D-M3AC1-1
	1 Brown 2 White 3 Blue 4 Black		0.3 (1)	M14 x 1	B	888D-M3AC6-0M3
			1 (3.3)	1/2in-14NPT	A	888D-M4AC1-0M3
	1 Brown 2 White 3 Blue 4 Black 5 Grey		0.3 (1)	M14 x 1	B	888D-M4AC6-0M3
			1 (3.3)	1/2in-14NPT	A	888D-M5AC1-0M3
		0.3 (1)	1/2in-14NPT	A	888D-M5AC1-1	
			0.3 (1)	M14 x 1	B	888D-M5AC6-0M3
Mounting nuts for 1/2in-14NPT threaded receptacles are available in bags of 10 pieces.						889A-U1NUT-10
Flat, sealing washers for 1/2in-14NPT threaded receptacles are available in bags of 10 pieces.						889A-U1FSL-10