

1203-GK5, 1336-GM5

SELECTING THE ACTION TAKEN ON

- **DEVICENET COMMUNICATIONS LOSS**
- **SCANNER CHANGING TO DISABLED**

APPLICATION NOTE

JUNE 4, 1997

PURPOSE

The purpose of this document is to provide guidelines for wiring and control schemes for SCANport devices including Bulletin 1305 and 1336 PLUS AC Drives. This document is a suggestion only. Users must ensure that installations meet applicable codes and are suitable for the existing conditions.

INTENDED AUDIENCE

This application note should be used by personnel familiar with the hardware components and programming procedures necessary to operate SCANport devices. It is also assumed that the user has some familiarity with

WHERE IT IS USED

The diagrams, parameter settings and auxiliary hardware used in this application note are designed to address specific issues in many different applications. Some changes by the user may be necessary to apply the concepts of this document to a specific application.

WHAT THIS NOTE CONTAINS

This document contains information on configuring 1203-GK5 and 1336-GM5 modules to take various actions when DeviceNet communications are lost or the DeviceNet scanner is disabled.

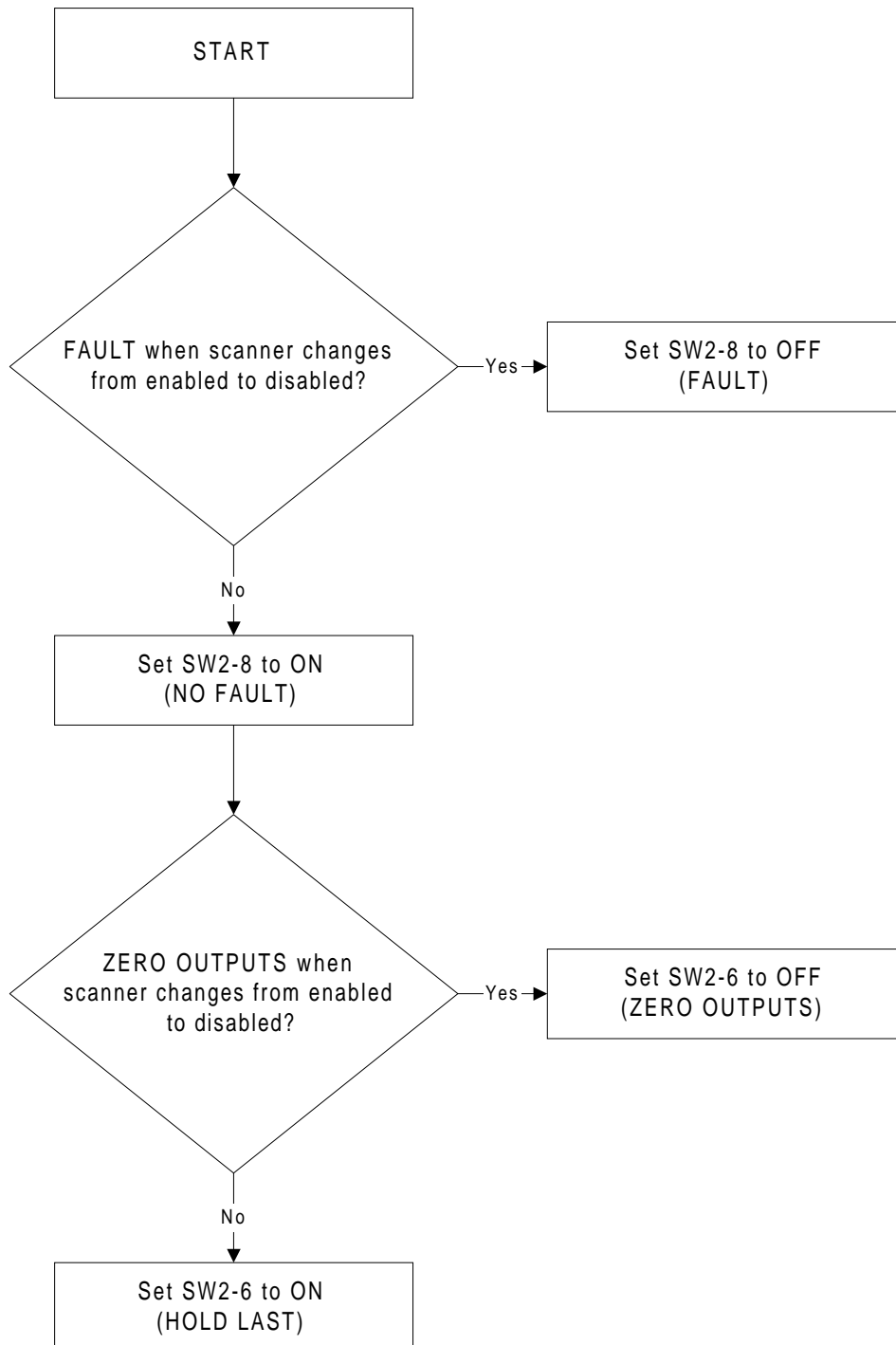
Note: In this and other documentation a reference to a "1203-Gx5" module refers to both the 1203-GK5 and 1336-GM5 modules.

APPLICATION CONSIDERATIONS

The examples were written to be simple and clear and do not fulfill all the functions needed for a real application. Consult the specific product manuals for more information.

SCANport devices may assign different meanings to bits in the Logic Command and Status words. The usage of the Reference and Feedback words may also vary. Consult the manual for your SCANport device for more information.

CONFIGURING THE ACTION TAKEN WHEN THE DEVICENET SCANNER CHANGES FROM ENABLED TO DISABLED



CONFIGURING THE ACTION TAKEN WHEN DEVICENET COMMUNICATIONS ARE LOST

