

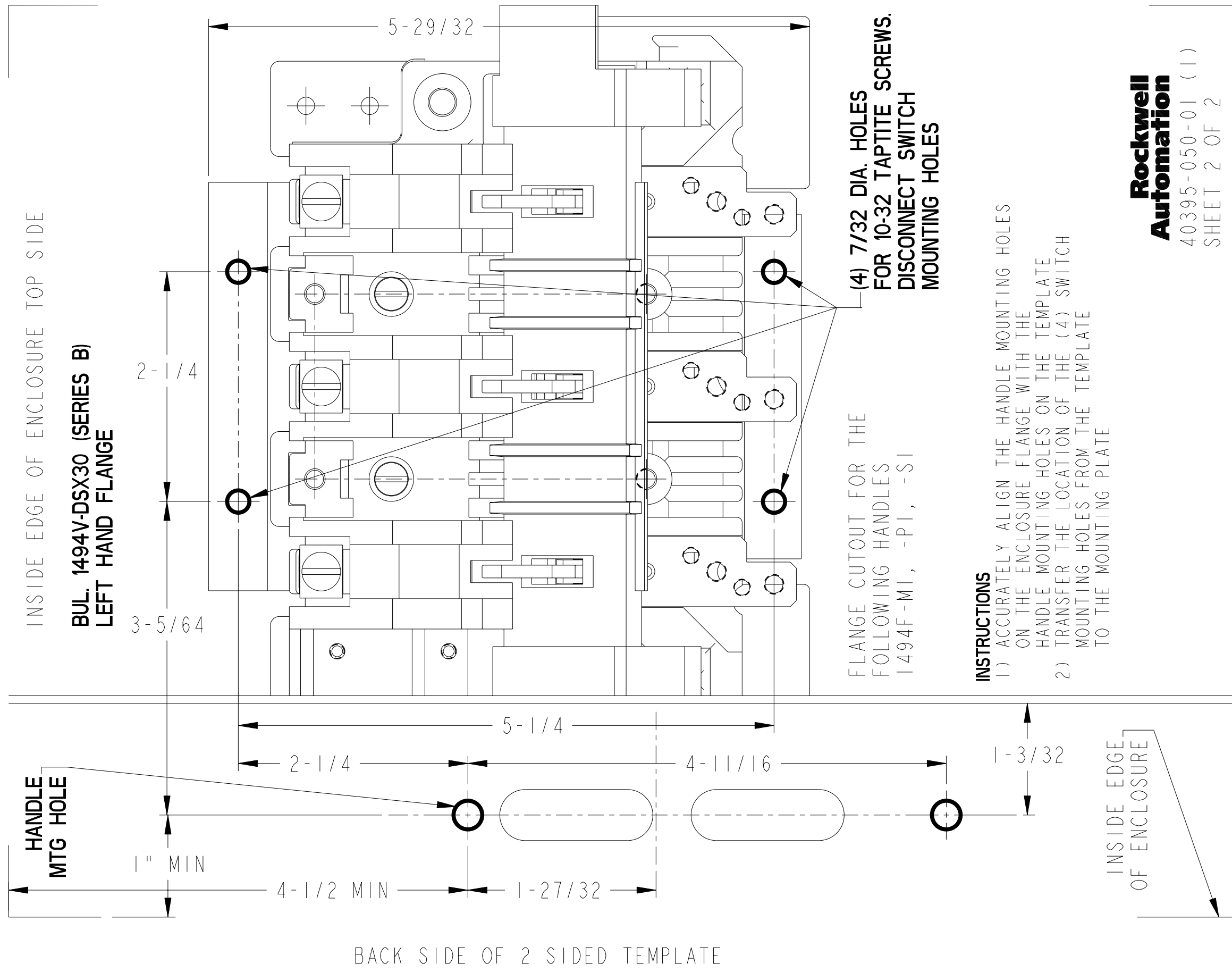
FRONT SIDE OF 2 SIDED TEMPLATE

INSTRUCTIONS

- 1) ACCURATELY ALIGN THE HANDLE MOUNTING HOLES ON THE ENCLOSURE FLANGE WITH THE HANDLE MOUNTING HOLES ON THE TEMPLATE
- 2) TRANSFER THE LOCATION OF THE (4) SWITCH MOUNTING HOLES FROM THE TEMPLATE TO THE MOUNTING PLATE

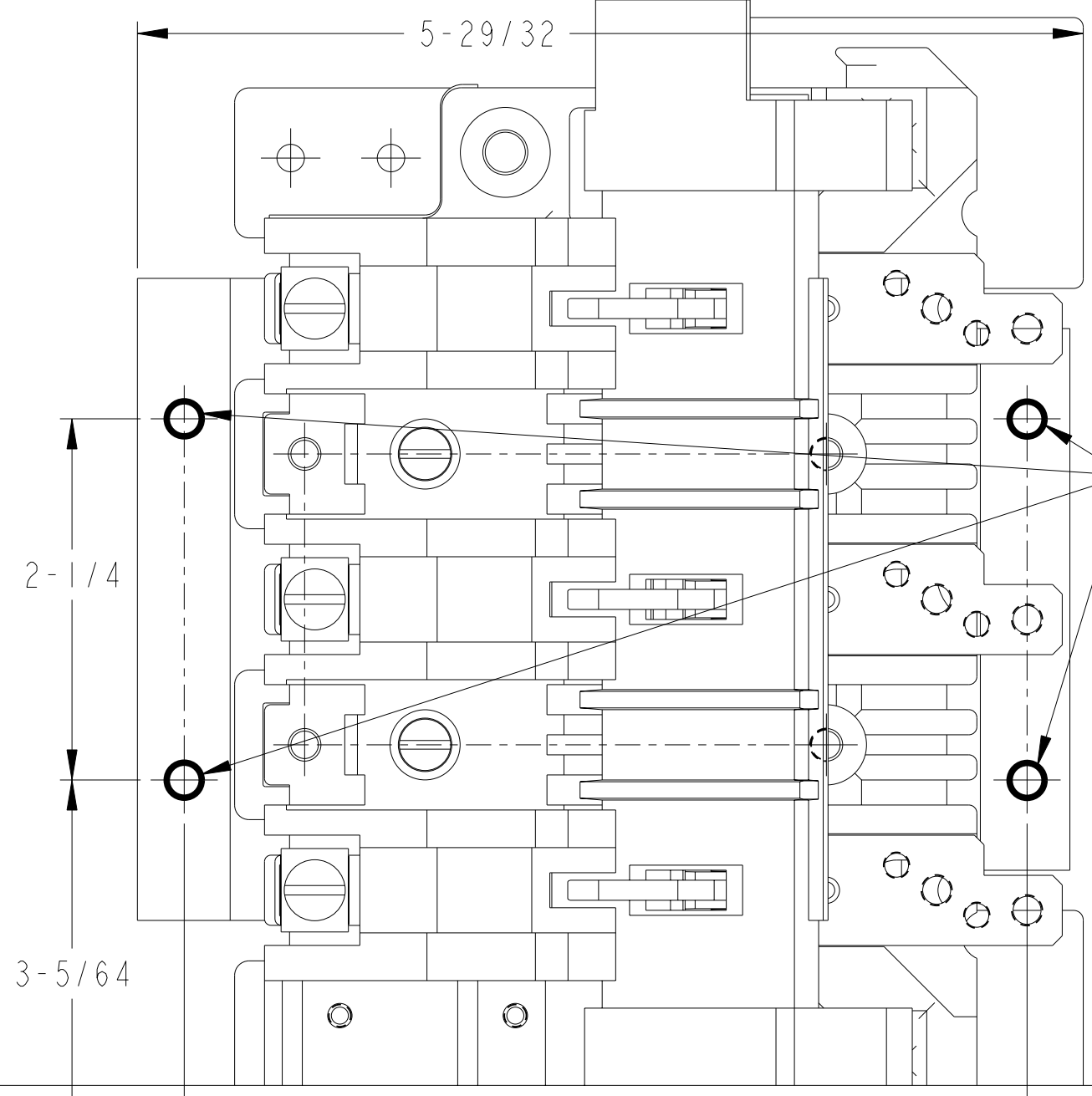
Rockwell Automation

40395-050-01 (1)
SHEET 1 OF 2



INSIDE EDGE OF ENCLOSURE TOP SIDE

BUL. 1494V-DSX30 (SERIES B)
LEFT HAND FLANGE

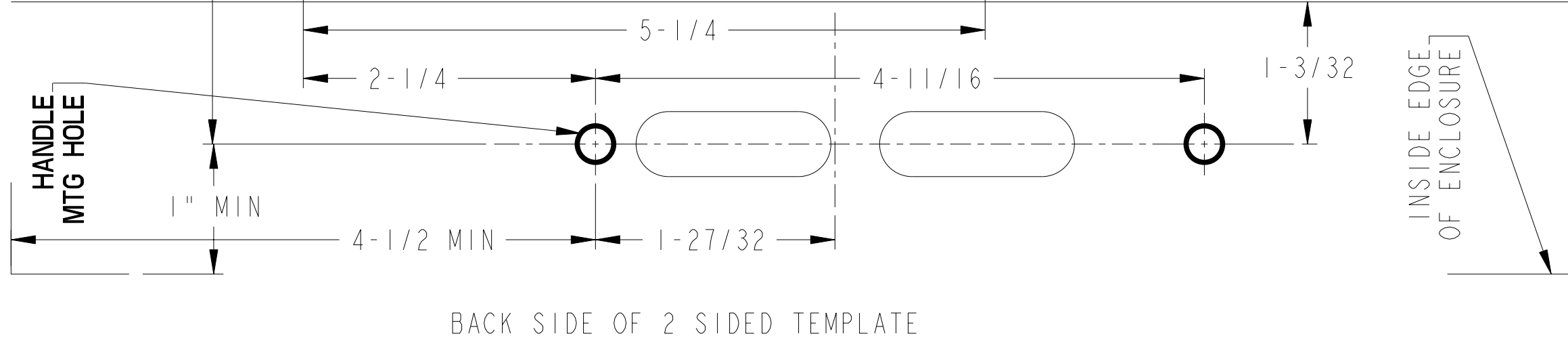


(4) 7/32 DIA. HOLES
FOR 10-32 TAPTITE SCREWS.
DISCONNECT SWITCH
MOUNTING HOLES

FLANGE CUTOUT FOR THE
FOLLOWING HANDLES
1494F-MI, -PI, -SI

INSTRUCTIONS

- 1) ACCURATELY ALIGN THE HANDLE MOUNTING HOLES ON THE ENCLOSURE FLANGE WITH THE HANDLE MOUNTING HOLES ON THE TEMPLATE
- 2) TRANSFER THE LOCATION OF THE (4) SWITCH MOUNTING HOLES FROM THE TEMPLATE TO THE MOUNTING PLATE



BACK SIDE OF 2 SIDED TEMPLATE

INSIDE EDGE
OF ENCLOSURE