



3130-UT Terminal Strip Board

General Description

The Terminal Strip Board (Figure 1) is actually an interconnect board that receives a 40-pin ribbon cable and breaks-out its connectors to captive screw-type adapter terminals to ensure secure connections. The board can be utilized with the 3100-US2, 3100-AIO, 3100-UC1, 3100-DI and 3100-DO Boards.

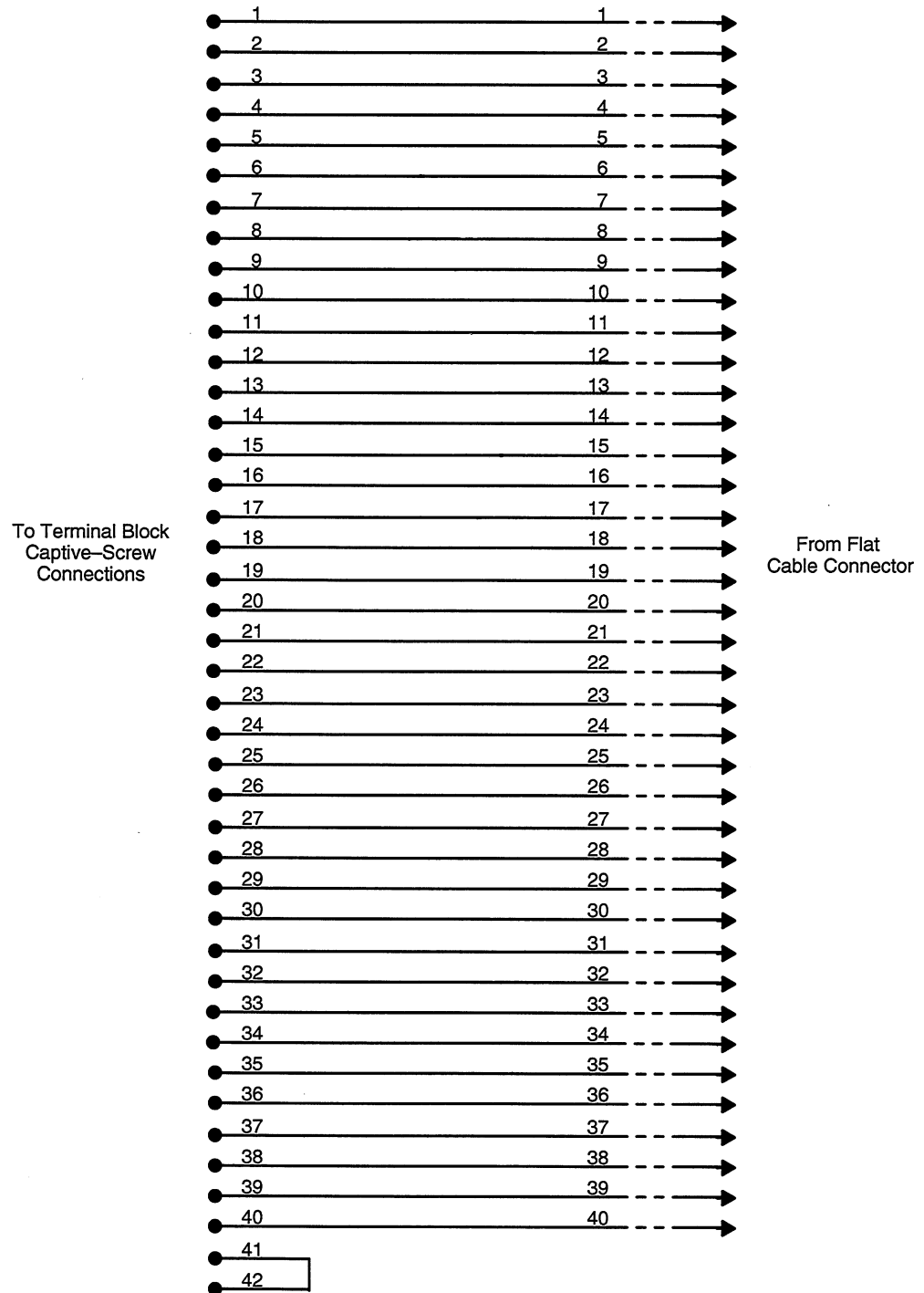


Figure 1. Terminal Strip Connections

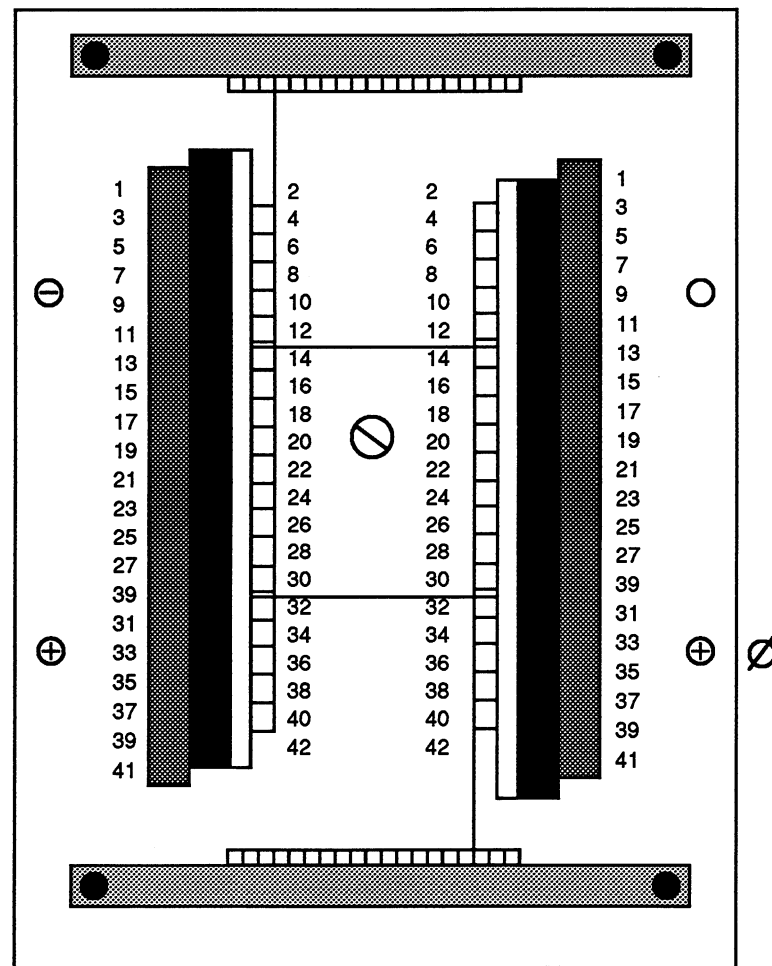
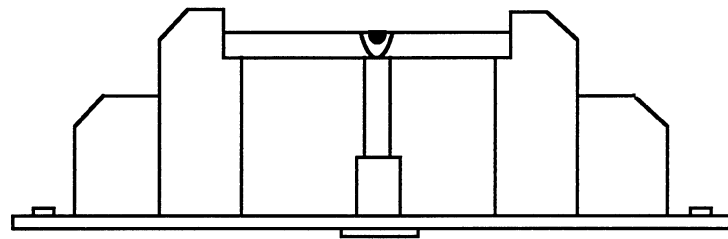


Figure 2. Dimension Drawing of the UT86-2 x 40C Board



ALLEN-BRADLEY

A ROCKWELL INTERNATIONAL COMPANY

As a subsidiary of Rockwell International, one of the world's largest technology companies — Allen-Bradley meets today's challenges of industrial automation with over 85 years of practical plant-floor experience. More than 13,000 employees throughout the world design, manufacture and apply a wide range of control and automation products and supporting services to help our customers continuously improve quality, productivity and time to market. These products and services not only control individual machines but integrate the manufacturing process, while providing access to vital plant floor data that can be used to support decision-making throughout the enterprise.

With offices in major cities worldwide.

WORLD HEADQUARTERS

1201 South Second Street
Milwaukee, WI 53204 USA
Tel: (414) 382-2000
Telex: 43 11 016
FAX: (414) 382-4444

EUROPE/MIDDLE EAST/ AFRICA HEADQUARTERS

Allen-Bradley Europe B.V.
Amsterdamseweg 15
1422 AC Uithoorn
The Netherlands
Tel: (31) 2975/43500
Telex: (844) 18042
FAX: (31) 2975/60222

ASIA/PACIFIC HEADQUARTERS

Allen-Bradley (Hong Kong) Ltd.
Room 1006, Block B, Sea View Estate
2-8 Watson Road
Hong Kong
Tel: (852) 887-4788
Telex: 64347 ABHKG HX
FAX: (852) 510-9436
(852) 510-9420

CANADA HEADQUARTERS

Allen-Bradley Canada Limited
135 Dundas Street
Cambridge, Ontario N1R 5X1
Canada
Tel: (519) 623-1810
Telex: (069) 59317
FAX: (519) 623-8930

LATIN AMERICA HEADQUARTERS

1201 South Second Street
Milwaukee, WI 53204 USA
Tel: (414) 382-2000
Telex: 43 11 016
FAX: (414) 382-2400

Motion Control Division
Mequon, WI 53092 USA